

**T H E M O S T V E R S A T I L E
P E R F O R M A N C E**

CF-Q160 L/I/S



**EVIS
EXERA**

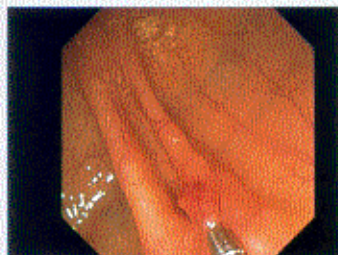
FROM SCOPES TO
ENDOSCOPY



OLYMPUS

T H E V I S I B L E D I F F E R E N C E

EVIS EXERA Video Colonoscope CF-Q160 L/I/S



With its sharp image quality, selectable image size and auxiliary water function which maintains a clear view at all times, the OLYMPUS CF-Q160 L/I/S is the most versatile colonoscope for diagnostic and therapeutic applications.

- 12.8 mm outer diameter
- 3.7 mm channel for wide range of treatment options and high suction capability
- Better scope manoeuvrability through ergonomically improved control section
- CV-140 compatibility offers investment protection
- Scope ID function enables improved service interval monitoring and facilitates automatic system setup such as automatic white balance (with CV-160)

CF-Q160 L/I/S



Specifications

Optical System	Field of view	140°
	Depth of field	3 to 100 mm
Distal End	Outer diameter	12.8 mm
Insertion Tube	Outer diameter	L, I: 12.8 mm, S: 13.2 mm
		Range of distal end bending
Working Length		L: 1680 mm, I: 1330 mm
		S: 730 mm
Total Length		L: 2000 mm, I: 1650 mm
		S: 1040 mm
Instrument Channel	Inner diameter	3.7 mm

Specifications and design are subject to change without any obligation on the part of the manufacturer.

OLYMPUS

THE VISIBLE DIFFERENCE

Endoscopy · Photography · Microscopy · Diagnostics · Communications

