

# OLYMPUS

Your Vision, Our Future

## CYF-VH

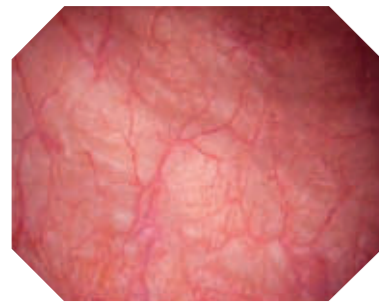
The world's first flexible HD cysto-nephro videoscope.



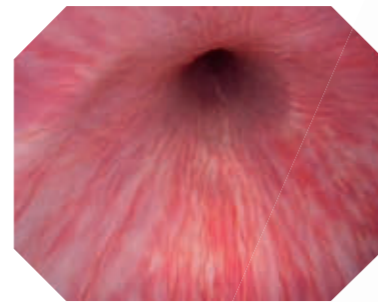
## THE NEXT LEVEL OF ENDOSCOPIC IMAGING

### High-Definition TV (HDTV)

The revolutionary CYF-VH is the first endoscope of its kind to provide a high-definition image in an endoscope this small.



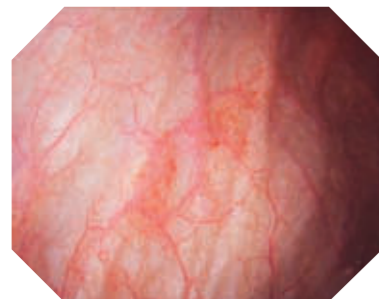
*The cristal-clear view in the urethra improves detection and diagnosis of suspicious areas.*



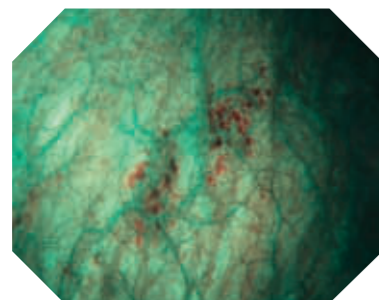
*Already under white light, the CYF-VH allows a wider view and detailed vision, which is primarily important for all bladder cancer follow-up cystoscopies.*

### NBI (Narrow Band Imaging)

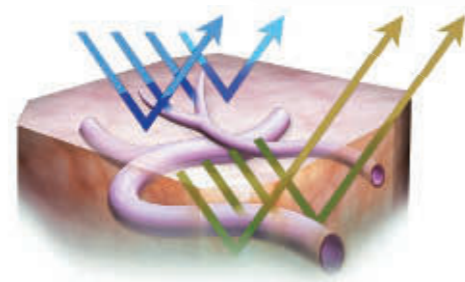
HD NBI potentially allows for a higher and improved detection rate of carcinoma in situ. In order to improve the diagnosis, the brightness of NBI was increased by 20% compared to CYF-V2.



White light



NBI



NBI is an optical image-enhancement technology that improves the visibility of vessels and other tissue on the mucosal surface. NBI works by filtering the white light into specific light wavelengths, which are absorbed by hemoglobin and penetrate only the surface of human tissue. This provides improved visual contrast of the surface structures and fine capillary patterns of mucous membranes, which are normally difficult to distinguish.

## IMPROVING PATIENT COMFORT – NEW ENDOSCOPE DESIGN

### New EvolutionTip

In addition, the tip design improves light emittance and increases the light output by 150% (compared to the CYF-V2).



CYF-V2 tip

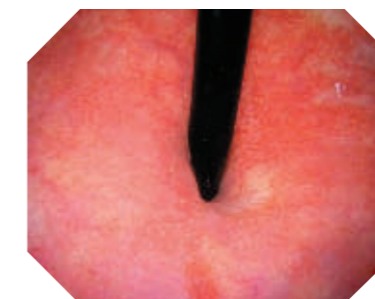


CYF-VH tip

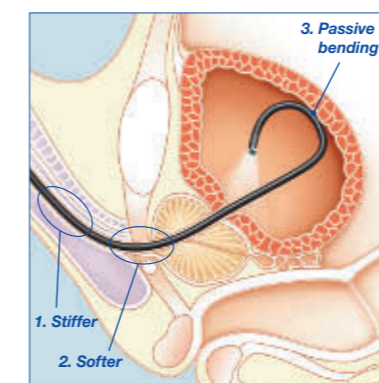
### Variable stiffness shaft

To further improve patient comfort, the CYF-VH shaft varies in stiffness:

- Proximally (1), the shaft is stiffer to maintain control in the urethra
- At mid-shaft (2), it is more flexible to minimise pressure and discomfort on sensitive anatomy
- A distal passive bending section (3) allows the scope to bend even further and minimises the potential of damage to the endoscope during normal use



*Suspicious regions within the delicate structures of the bladder neck can be easier identified with the help of the cristal-clear HD image of the CYF-VH.*



### Improved deflection

The CYF-VH bends 10° more in each direction with its 220° upward and 130° downward deflection, providing the ability to see and treat all areas of the bladder with ease.



### Large field of view

The wide 120° field of view provides a panoramic inspection of the entire bladder from the bladder neck.

## Ordering information

### Videoscopes

<b>CYF-VH</b>	Flexible cysto-nephro videoscope
<b>CYF-VHA</b>	Flexible cysto-nephro videoscope with suction valve
<b>CYF-VHR</b>	Flexible cysto-nephro videoscope with reverse angulation

### Standard set

Standard set includes one scope plus the following:

<b>MAJ-891</b>	Irrigation/Forceps plug (isolation type), 1/set
<b>MAJ-579</b>	Semi-disposable biopsy valve, 10/set
<b>MAJ-209</b>	Disposable suction valve (CYF-VHA only), 20/set
<b>MAJ-1077</b>	Suction cleaning valve (CYF-VHA only), 1/set
<b>MH-507</b>	Channel-opening cleaning brush, 1/set
<b>BW-15B</b>	Channel cleaning brush, 1/set
<b>MAJ-1538</b>	Sterilisation cap, 1/set

### EndoTherapy accessories

<b>FD-7C-1.B</b>	Hot biopsy forceps
<b>FB-19CR-1</b>	Rotatable biopsy forceps
<b>FB-19SX-1</b>	Biopsy forceps
<b>CD-6C-1</b>	Biopsy forceps
<b>CD-6C.B</b>	Coagulation electrode
<b>FG-38SX-1</b>	Grasping forceps
<b>FG-53SX-1</b>	Grasping forceps
<b>SD-7C.B</b>	Electrosurgical snare
<b>SD-18C.B</b>	Electrosurgical snare
<b>FG-24SX-1</b>	Grasping forceps
<b>EGBPS-Y*</b>	Adjustable biopsy port seal for accessories up to 9 Fr, 5/box

\* Supplied sterile, single-use, disposable

### Specifications

<b>Optical system</b>	Field of view	120°
	Direction of view	Forward-viewing (0°)
	Depth of field	3–50 mm
<b>Insertion tube</b>	Distal end, outer diameter	8.1 Fr (2.7mm)
	Insertion tube, outer diameter	16.5 Fr (5.5 mm)
	Working length	380 mm
<b>Instrument</b>	Inner channel, diameter	6.6 Fr (2.2 mm)
<b>Bending section</b>	Angulation range	220° upwards/130° downwards
<b>Total length</b>		660 mm

## EndoTherapy accessories



Hot biopsy forceps  
FD-7C-1.B



Rotatable biopsy forceps  
FB-19CR-1



Biopsy forceps  
FB-19SX-1



Biopsy forceps  
FB-15C-1



Coagulation electrode  
CD-6C-1



Grasping forceps  
FG-38SX-1



Grasping forceps  
FG-53SX-1



Electrosurgical snare  
SD-7C-1.B/SD-18C-1.B



Four-wire basket forceps  
FG-24SX-1

Specifications, design and accessories are subject to change without any notice or obligation on the part of the manufacturer.