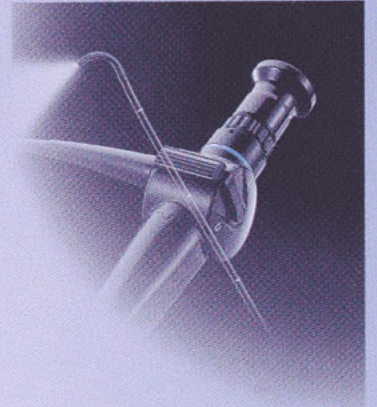


OLYMPUS[®]

RHINO-LARYNGO FIBERSCOPE

ENF TYPE P4

High-Grade Fiber Optics — Always A Step Ahead



Larger, Brighter, Crisper Images from the Leader in Diagnostic Laryngoscopy

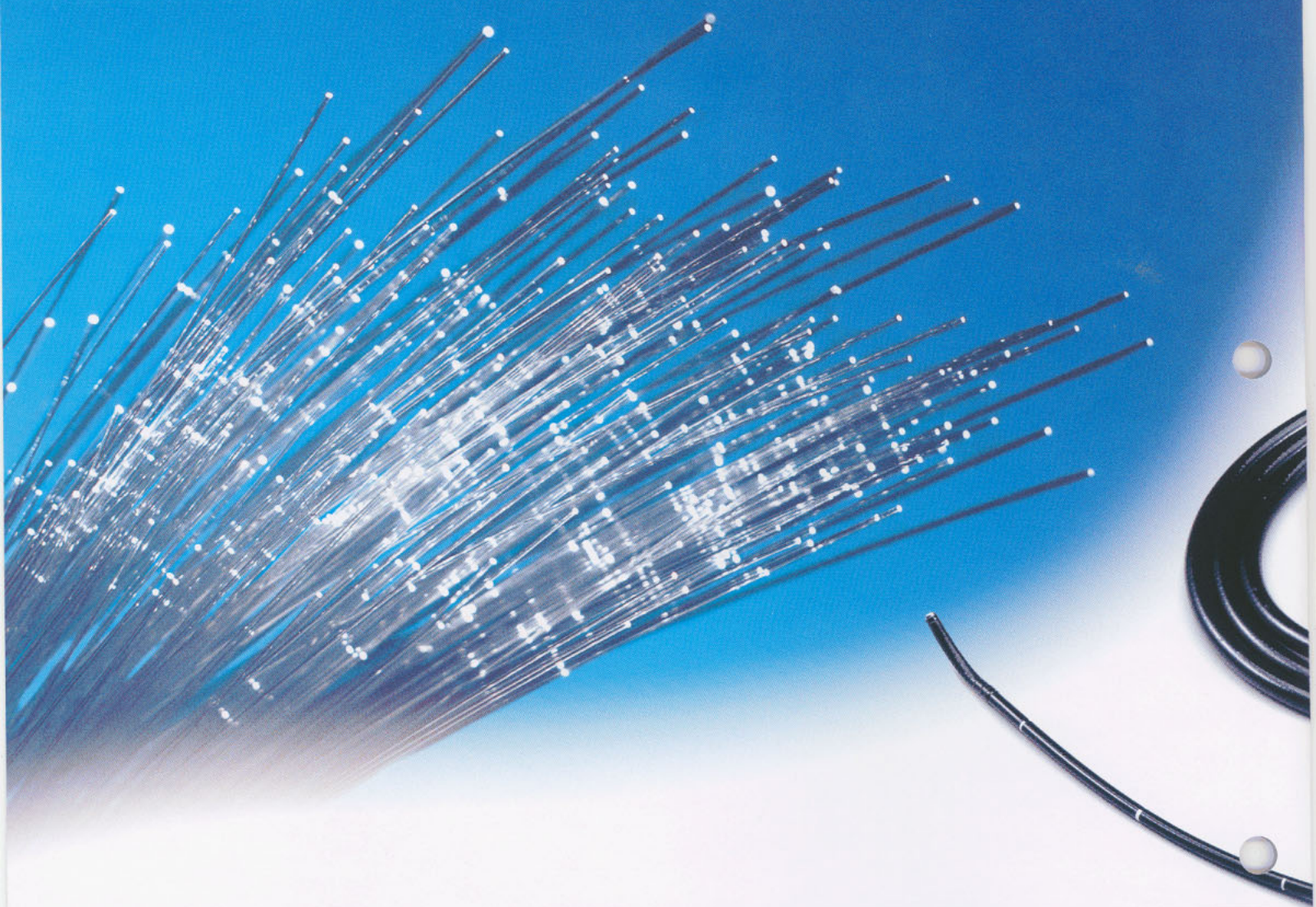
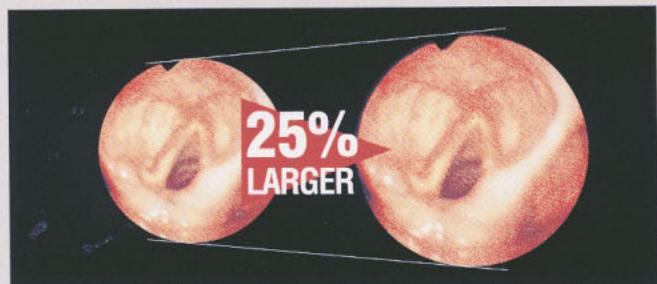


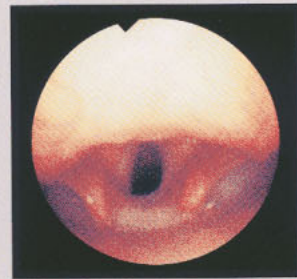
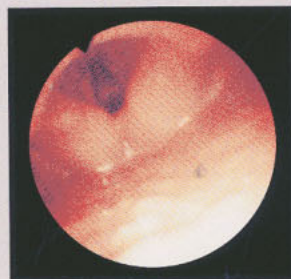
Image Size Now 25% Larger

This scope incorporates the very latest high-grade fiber-optic technology, ensuring that the images you see are as clear and accurate as possible, while also enabling us to add even more fibers, giving you an image that's bigger and brighter than ever — while maintaining the same 3.4 mm diameter of our previous models.



High Resolution Maintained

Improvements in fiber-optic technology have allowed us to increase the number of image guide fibers inside the scope, thereby increasing the amount of image detail. With the same resolution as our conventional model, together with a larger, brighter image, overall improvements in observation capability are remarkable.



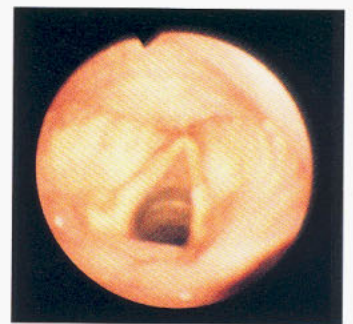
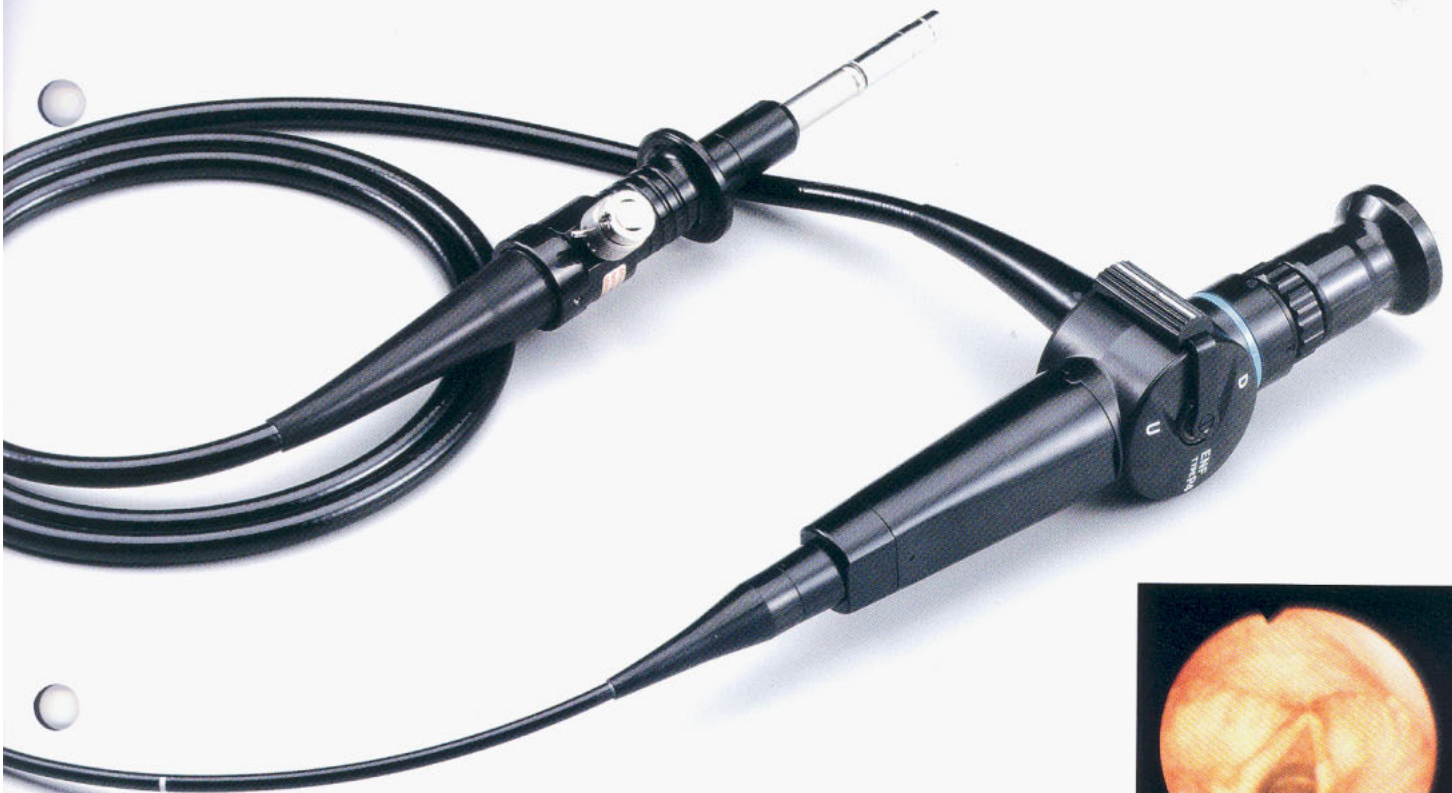


Longer 300 mm Scope

By lengthening the scope to 300 mm, we have made it easier to insert and use. Observation of the nasal cavity and pharynx is much easier, and you'll be able to work at a more comfortable distance when observing the larynx.

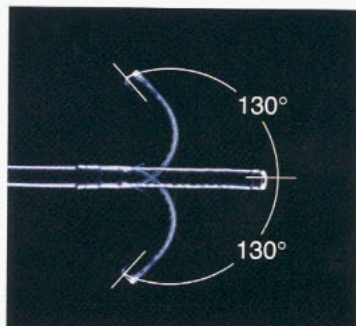
Enhanced Brightness

The ENF TYPE P4's newly developed optical system is extremely efficient at capturing and utilizing light, enabling it to provide images that are much brighter than our previous models while retaining the slim diameter you need for comfortable, easy operation. With its wide 85° field of view and enhanced brightness, the ENF TYPE P4 scope gives you clear, comprehensive views of the nasal cavity and laryngo-pharynx areas.



Wide 130° Up / Down Angulation

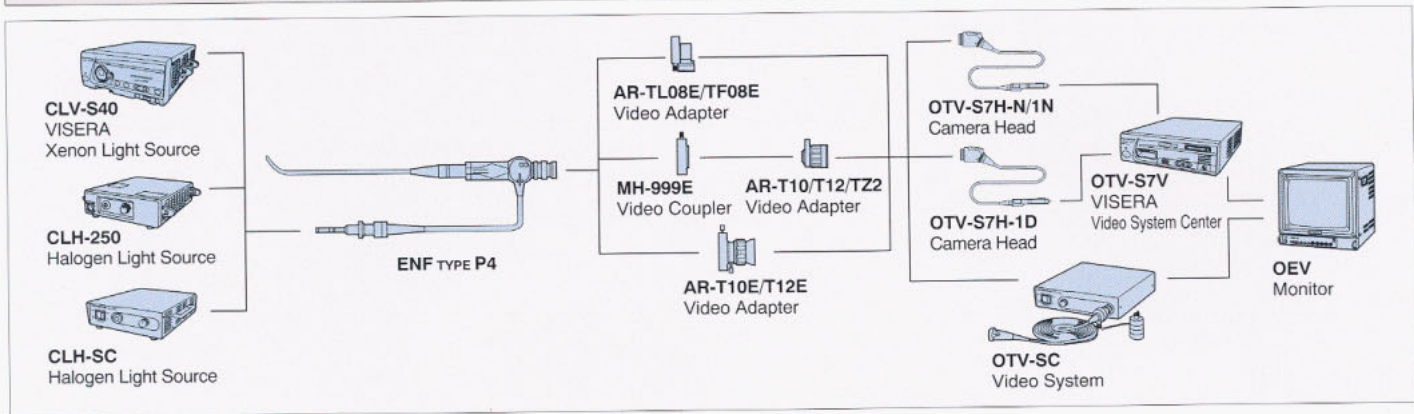
The ENF TYPE P4 can be angled up or down by up to 130°, making it easier to insert, remove and maneuver.



■ Specifications

Optical system	Field of view	85°
	Depth of field	5 ~ 50 mm
Distal end	Outer diameter	ø 3.4 mm
Insertion tube	Outer diameter	ø 3.6 mm
Length	Working length	300 mm
Bending section	Range of tip bending	130° / 130°
Total length		530 mm

System Chart

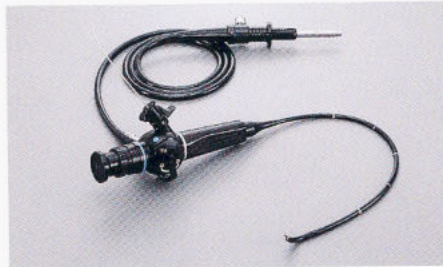


Olympus Rhino-Laryngo Fiberscope Lineup



ENF TYPE XP

Ultra-slim \varnothing 1.8 mm insertion tube — ideal for observation of narrow nasal cavities (e.g. neonate, infant and female).



ENF TYPE T3

\varnothing 2.2 mm channel — enables on-the-spot procedures such as biopsies, suction, or removal of foreign bodies.



ENF TYPE L3

Can be connected directly to a camera or video system — the perfect choice for recording.

Ancillary Equipment



CLH-SC Halogen Light Source

This light source is compact, powerful, and shares the same design as the OTV-SC.



OTV-SC Video System

This system offers high-resolution digital signal processing imaging, outstanding sensitivity, and the same compact design as the CLH-SC.



OEV Monitor

Featuring enhanced resolution, a simplified control panel, and a compact, lightweight design, the OEV monitor provides images with exceptional detail, clarity, and sharpness.

Specifications, design and accessories are subject to change without any notice or obligation on the part of the manufacturer.

OLYMPUS[®]

OLYMPUS OPTICAL CO. LTD.
2951 Ishikawa-cho, Hachioji-shi, Tokyo 192-8507, Japan
OLYMPUS WINTER & IBE GMBH
Kuelnstrasse 61, 22045 Hamburg, Germany
OLYMPUS OPTICAL CO. (EUROPA) GMBH.
Postfach 10 49 09, 20034 Hamburg / Wendenstrasse 14-16, 20097 Hamburg, Germany
OLYMPUS AMERICA INC.
2 Corporate Center Drive, Melville, N.Y. 11747-3157, U.S.A.
OLYMPUS LATIN AMERICA, INC.
6100 Blue Lagoon Drive, Suite 390, Miami, Florida 33126-2087, U.S.A.
OLYMPUS KEYMED
Keymed House, Stock Road, Southend-on-Sea, Essex SS2 5QH, England

OLYMPUS SINGAPORE PTE LTD.
491B, River Valley Road, #12-01/04, Valley Point Office Tower, Singapore 248373
OLYMPUS HONG KONG AND CHINA LIMITED.
Room 1520-1527, Ocean Centre, 5 Canton Road, Tsimshatsui, Kowloon, Hong Kong
OLYMPUS BEIJING REPRESENTATIVE OFFICE
Room 1401, East Tower, Gong Yuan No.6 Royal Palace, No.6 GongYuanXijie, JianGuoMenNei, DongCheng District, Beijing, 100005, China
OLYMPUS MOSCOW LIMITED LIABILITY COMPANY
117071, Moscow, Malaya kaluzhskaya 19, bld. 1, fl. 2, Russia
OLYMPUS AUSTRALIA PTY. LTD.
31 Gilby Road, Mount Waverley, VIC, 3149, Australia