

EUS EXERA COMPACT ENDOSCOPIC ULTRASOUND CENTER

EU-C60



EUS EXERA ULTRASONIC GASTROVIDEOSCOPE

OLYMPUS **GF** TYPE **UC160P**-OL5

OLYMPUS **GF** TYPE **UCT160**-OL5

With superior imaging performance and FNA capability, this compact new ultrasound system heralds the new era of excellence in EUS



*Specifically Designed For EUS-Guided FNA Procedures,
Olympus's Leading-Edge Endoscopic Ultrasonography System
Features High-Quality Ultrasound Images,
Clear High-Resolution Video Images And Advanced Scope Design*

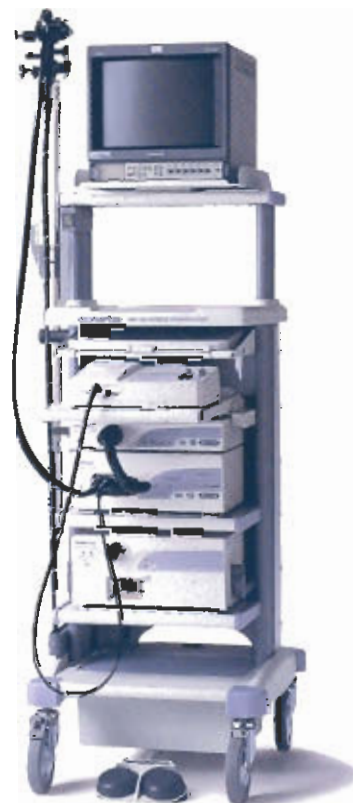


 **EUS EXERA COMPACT ENDOSCOPIC ULTRASOUND CENTER**

EU-C60

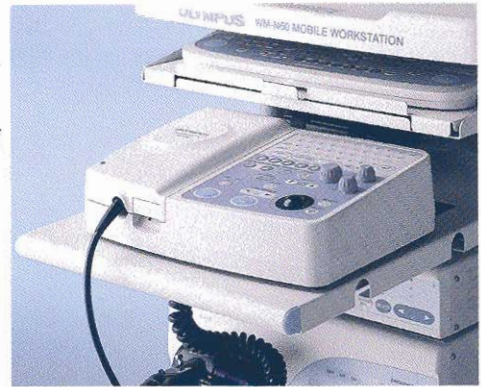
**EUS-guided FNA procedures have never been so simple
or so efficient**

Designed to make EUS-guided fine-needle aspiration more efficient, the EU-C60 Compact Endoscopic Ultrasound Center, together with the GF-UC160P and GF-UCT160 scopes, makes it much easier for you and your patients to benefit from the enormous potential of EUS. The ultrasound center's sleek, compact design makes it easy to install and transport on your existing endoscopy trolley, while its convenient keyboard with trackball gives you versatile, easy-to-operate control over the system's many powerful functions. On the imaging side, the GF-UC160P and GF-UCT160 scopes feature an exclusive high-performance transducer that efficiently converts sound waves into sharp, comprehensible ultrasound images. For video endoscopy, a high-resolution CCD built into the scope tip captures clear, bright images that can be displayed side by side with the ultrasound images to give you a full and comprehensive picture. This powerful performance of the new EU-C60 system together with the Olympus NA-10J-1 Aspiration Needle enables you to perform FNA with greater precision and confidence.



Compact, easy-to-use processor for your advanced EUS-guided FNA procedures.

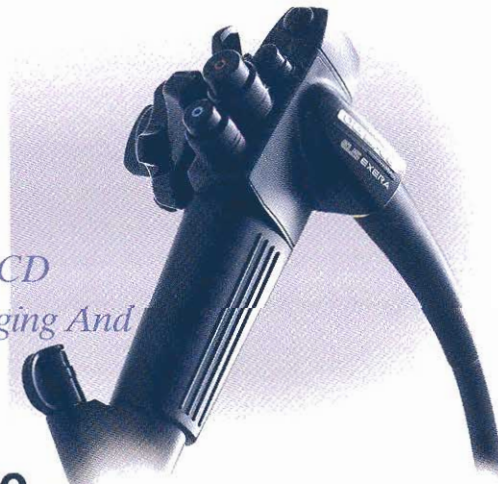
- Small size and light weight: minimal space in your endoscopy suite.
- Color Power Doppler (CPD): easier identification of blood flow at the touch of a button.
- Useful memory functions: Cine Image and Store Image.
- Increased flexibility in EUS-guided FNA and video endoscopy: total system compatibility on your existing endoscopy trolley.
- Streamlined flat panel: simple operation of mode adjustment, easy to wipe off.



Major indications for EUS-guided applications.

- Assistance in the staging and tissue acquisition of malignant disease:
Gastrointestinal tract cancers, including esophageal, pancreatic, gastric and colorectal, and lung cancer through mediastinal nodal involvement.
- Assessment of benign disease:
Such as chronic pancreatitis, choledocholithiasis, (common bile duct stones) and gallstones.
- Interventional applications:
Celiac plexus block, or neurolysis, and pseudocyst drainage.

Ultra-Compact Transducer And High-Resolution CCD For Superiority In Both Ultrasound And Video Imaging And Tip Design For Outstanding Insertion Capability

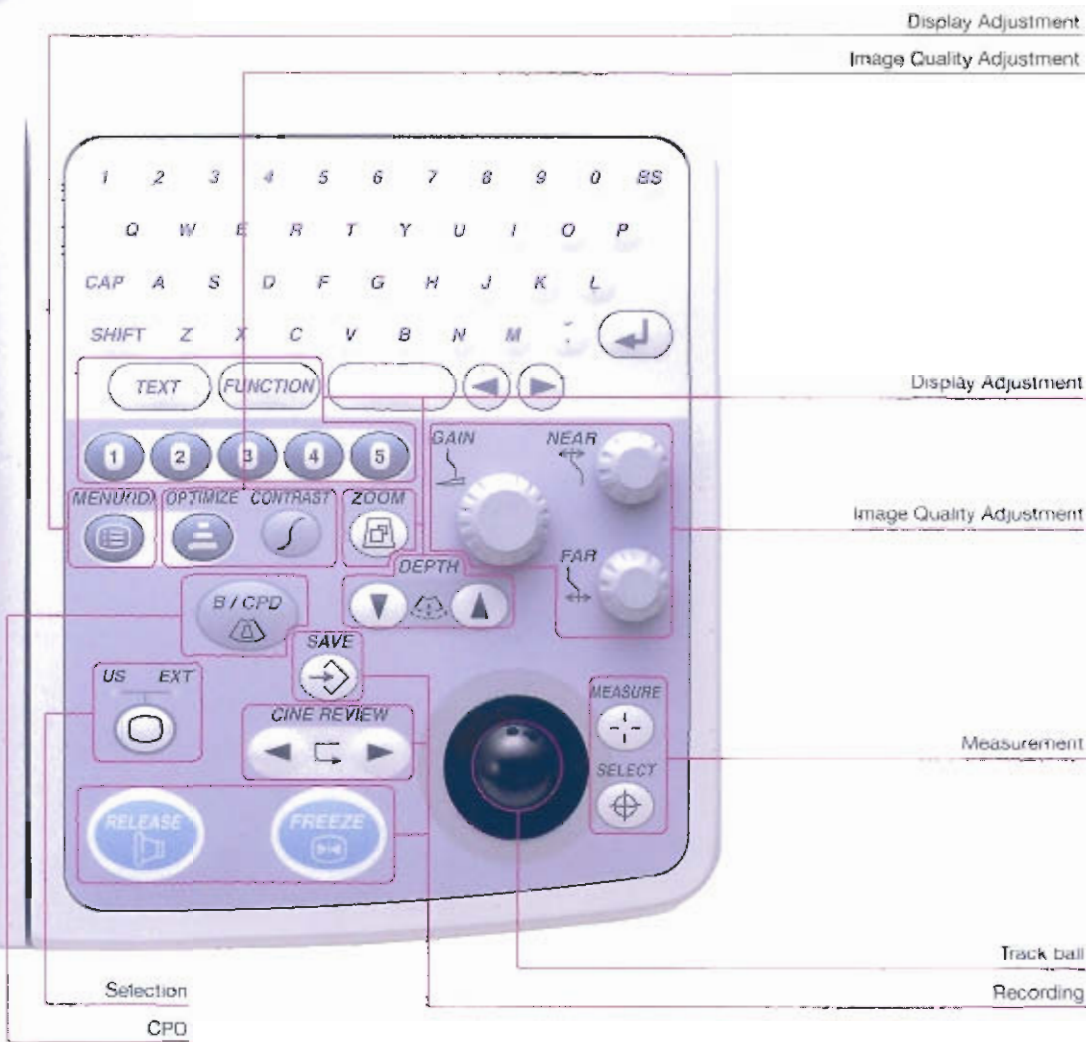


EUS EXERA ULTRASONIC GASTROVIDEOSCOPE GF TYPE **UC160P-OL5** / GF TYPE **UCT160-OL5**

Features

- Ultra-compact transducer incorporated into the distal end has a 5 mm radius of curvature, offering outstanding maneuverability inside the upper digestive tract.
- High-resolution CCD delivers crystal-clear, true-to-life video endoscopic images and enables accurate visualization of the target area and the FNA needle as it exits the endoscope.
- Convex scanning makes possible various imaging features including B-mode and advanced Color Power Doppler (CPD) mode for the detection of vascular structures.
- Wide 150° scanning angle ensures comprehensive imaging of all structures surrounding the region of interest.
- The GF-UC160P-OL5 has a slim 11.8 mm insertion tube diameter and 2.8 mm channel diameter for FNA with a 22G needle.
- The GF-UCT160-OL5 has a large 3.7 mm diameter channel for FNA. Suitable for pancreatic cyst drainage under fluoroscopic imaging guidance.





Easy Operation from the EU-C60 Keyboard

Display Adjustment functions

Images can be adjusted using eight-step display ranges (2-9).
Images can be zoomed in or out, be inverted or reversed.

Image Adjustment functions

Three gain settings — GAIN, NEAR GAIN, and FAR GAIN are available. The OPTIMIZE function allows B-mode and Color Power Doppler (CPD) images to be adjusted in three steps: PEN (penetration), RES (resolution), and GEN (general).

Measurement functions

The EU-C60 offers a variety of measurement functions. The Distance mode measures a distance defined by the "+" and "x" calipers. The Area/Circumference mode measures the area and its circumference enclosed by the ellipse tracing. Various extracorporeal probes are also available, improving the versatility of the EU-C60 to include such applications as transabdominal imaging.

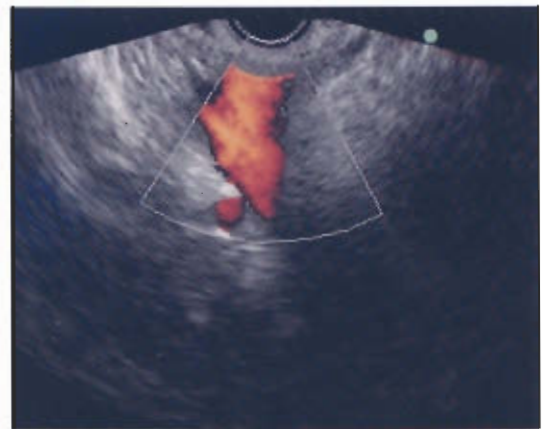
Memory functions

The Store Image mode allows for storage of approximately 120 images in the built-in RAM. The Cine Image mode provides you with a series of sequential images taken just before FREEZE is activated, so you will not miss the exact image required. Other digital modes include B-mode and Color Power Doppler (CPD) mode.

Clear, Accurate EUS EXERA Visualization



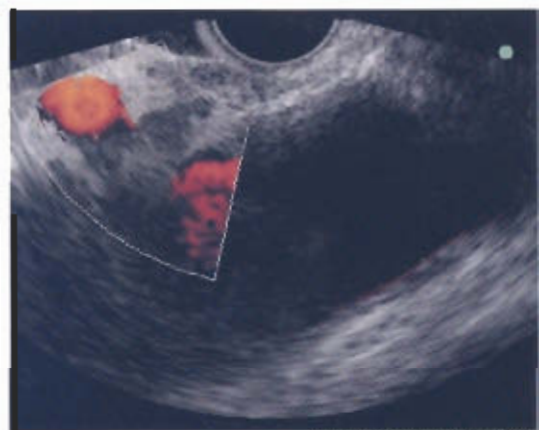
Needle Visibility



Color Power Doppler (CPD)



Needle Visibility



Color Power Doppler (CPD)

ASPIRATION NEEDLE NA-10J-1

Excellent targeting capability, outstanding tip visibility, and unique adjustable sheath



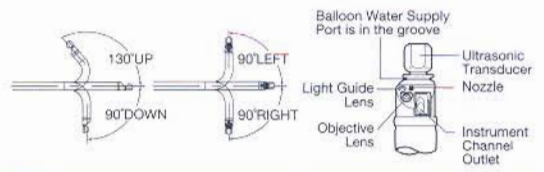
Features

- Built for use with all the Olympus ultrasonic endoscopes designed for EUS-guided FNA, the NA-10J-1 allows for accurate manual targeting of suspicious lesions.
- Handle mounts onto the ultrasonic endoscope's channel port for added stability.
- An adjustable-length sheath guides the needle to the target area and provides support during puncture, minimizing the need to reposition the endoscope.
- Excellent needle tip visibility, due to a highly echogenic dimpled tip design.
- Sheath and handle are autoclavable for quick, easy sterilization.
- Needle and stylet are single-use disposable and packaged sterile.



EU-C60 Specifications

Power supply	Voltage	120VAC / 230VAC
	Input current	0.6A (120V), 0.3A (230V)
Size	Dimensions (main unit)	313 mm (W) × 220 mm (D) × 93 mm (H) *not include rubber-foot
	Weight (main unit)	2.4 kg
	Type of protection	Class I
Classification	Degree of protection against electric shock of applied part	TYPE BF applied part where no classification mark appears, the device is a TYPE BF applied part.
	EMC compliance	IEC60601-1-2 CISPR11 GROUP1, Class A
Type BF applied part	The instrument can safely be applied to any part of the body except the heart.	
Monitor observation	Display mode	B-Mode, Color Power Doppler Mode
	Display polarity	Positive display only
	Scanning display	Convex, linear
	Display range	2 - 24 cm
	Beam forming	Digital beam former
Signal processing	STC	Near, Far
	Distance	Measures distance defined by the "+" and "x" calipers.
Measurement	Area / circumference	Measures area / circumference enclosed by caliper tracing.
	Volume calculation	Calculates volume by three sets of distance measurement.
	OB calculations	Fetal age, estimated delivery date, estimated fetal weight
	Cardiac calculations	Ejection fraction, cardiac output
	Calendar timer	Displays date and time
Display	Transducer name	Displays transducer name
	Display setting	Displays optimize setting
	Display characters	Alphanumerics and symbols
	Photographic and recording units	Video printer (color / monochrome), VTR
Ancillary equipment	Remote controllers	Foot switch
	Other	Current image selection
The monitor display can be switched between external input image and ultrasonic image.		



NA-10J-1 Specifications

Maximum insertion portion diameter	ø2.35 mm
Working length	1450 mm
Needle width	22 G
Needle length	65 mm
Type	Sheath slide type
Compatible Olympus endoscopes	Model: GF-UC160P-OL5, GF-UCT160-OL5 GF-UC140P-AL5, GF-UCT140-AL5 GF-UMD140P, GF-UM30P, GF-UC30P

Contents	Needle Section	Sheath Section	Handle Section
Set/Model			
NA-10J-1 Standard Set	Set of 5	Single	Single
MAJ-363-Set-A	Set of 5	—	—
MAJ-363-Set-B	Single	—	—
MAJ-364	—	Single	—
MAJ-365	—	—	Single

* NA-11J-KB Specifications

(*Upon NA-11J-KB is also available for all the Olympus EUS-guided fine-needle aspiration needles.)

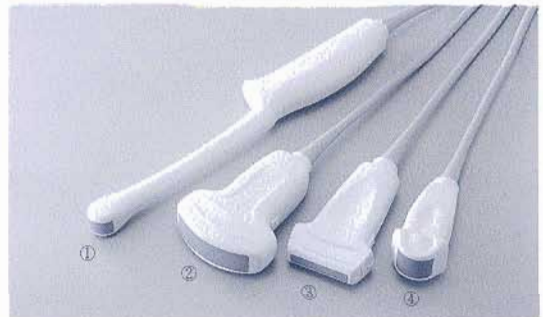
Maximum insertion portion diameter	ø2.35 mm
Working length	1450 mm
Needle width	22 G
Needle length	Manual: 60 mm Auto: 0-30 mm
Function	Spring-assisted
Type	Sheath slide type
Compatible Olympus endoscopes	Model: GF-UC160P-OL5, GF-UCT160-OL5 GF-UC140P-AL5, GF-UCT140-AL5 GF-UMD140P, GF-UM30P, GF-UC30P

Contents	Needle Section	Sheath Section	Handle Section
Set/Model			
NA-11J-KB Standard Set	Set of 5	Single	Single
MAJ-903	—	—	Single
MAJ-904	—	Single	—
MAJ-919	Set of 5	—	—

GF-UC160P-OL5 / GF-UCT160-OL5 Specifications

		GF-UC160P-OL5	GF-UCT160-OL5
Endoscope functions	Optical system	Field of view	100°
		Direction of view	55° forward oblique
		Depth of field	3 to 100 mm
	Insertion tube	Distal end outer diameter	ø14.2 mm
		Insertion tube outer diameter	ø11.8 mm
		Working length	1250 mm
	Instrument channel	Channel inner diameter	ø2.8 mm
		Minimum visible distance	6 mm
		Direction from which Endo-Therapy accessories enter and exit the endoscopic image	
	Bending section	Angulation range	UP 130°, DOWN 90°, RIGHT 90°, LEFT 90°
Total length		1575 mm	
Ultrasonic functions	Display mode	B-mode, Color Power Doppler mode	
	Scanning method	Electrical curved linear array	
	Scanning direction	Parallel to the insertion direction	
	Frequency	7.5MHz	
	Scanning range	150°	
	Contacting method	Balloon method Sterile de-aerated water immersion method	

Probe Lineup



- ① ICT/7-4 Intracavitary Probe
- ② C60/5-2 Convex Probe (for general-purpose abdominal applications)
- ③ L38/10-5 Linear Probe (for small parts)
- ④ C15/4-2 Micro Convex Probe (for transthoracic and abdominal imaging)

Any product in our brochures that features this is part of the lineup of Olympus fine-needle aspiration biopsy products.

Olympus business areas



OLYMPUS®

FOCUS ON LIFE

OLYMPUS OPTICAL CO., LTD.
295-1 Ishikuma-cho, Hachioji-shi, Tokyo 192-8507, Japan
OLYMPUS OPTICAL CO. (EUROPA) GMBH.
Postfach 10 49 08, 20034 Hamburg / Wendenstrasse 14-18, 20097 Hamburg, Germany
OLYMPUS AMERICA INC.
2 Corporate Center Drive, Melville, N.Y. 11747-3157, U.S.A.
OLYMPUS KEYMED
Keymed House, Stock Road, Southend-on-Sea, Essex SS2 5QH, England
OLYMPUS SINGAPORE PTE LTD.
491B River Valley Road #12-01/04, Valley Point Office Tower, Singapore 248373
OLYMPUS HONG KONG AND CHINA LIMITED.
Room 1520-1527, Ocean Centre, 5 Canton Road, Tsimshatsui, Kowloon, Hong Kong
OLYMPUS BEIJING REPRESENTATIVE OFFICE
Rm 818, South Tower, Beijing Kerry Centre, No.1 Guanghua Road, Chaoyang District, Beijing 100020, China
OLYMPUS MOSCOW LIMITED LIABILITY COMPANY
117071, Moscow, Malaya Kaluzhskaya 19, bld. 1, fl.2, Russia
OLYMPUS AUSTRALIA PTY. LTD.
1/104 Ferntree Gully Road, Oakleigh, VIC 3166, Australia

<http://www.olympus.com>

Printed in Japan F895SB-09U1