

OLYMPUS®

EUS
ENDOSCOPIC ULTRASOUND SYSTEM

ULTRASONIC GASTROVIDEOSCOPE

OLYMPUS **GF** TYPE **UC140P-AL5**
OLYMPUS **GF** TYPE **UCT140-AL5**

A large central image showing a medical procedure. A hand holds a black endoscopic device with a long, thin needle. The needle is positioned over a colorful ultrasound image of internal tissue. The text 'Precision-Guided Fine Needle Aspiration' is overlaid on the image.

**Precision-Guided
Fine Needle Aspiration**

- **Clear Endoscopic Video Images**
- **Sharp Convex Scanning Ultrasound Images**
- **Powerful EUS Interventional Capability**

ALOKA DIAGNOSTIC ULTRASOUND SYSTEM
ProSound SSD-5500 PureHD
SSD-5000 PureHD



Olympus Introduces a New Endoscopic Ultrasound System That Allows You to Take Full Advantage of EUS-Guided FNA — an Established Technique for Tissue Diagnosis in and around the Digestive Tract

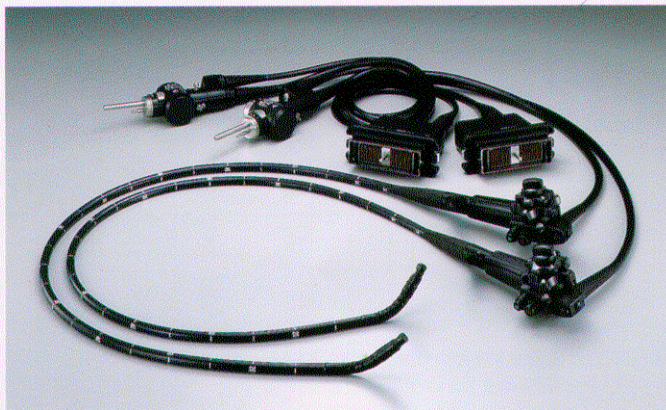


OLYMPUS **GF** TYPE **UC140P-AL5**
A Superior Scope Boasting Unprecedented Insertability and High-Quality Imaging

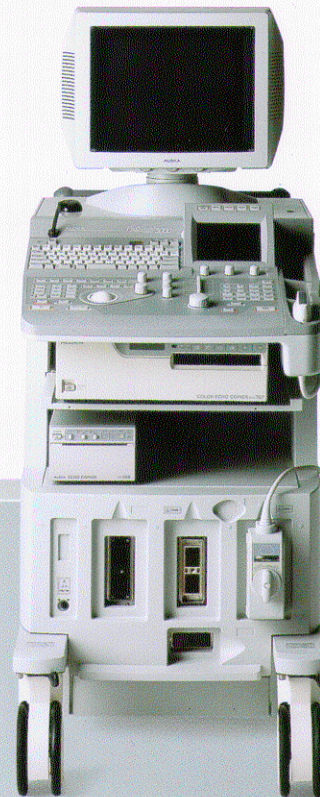
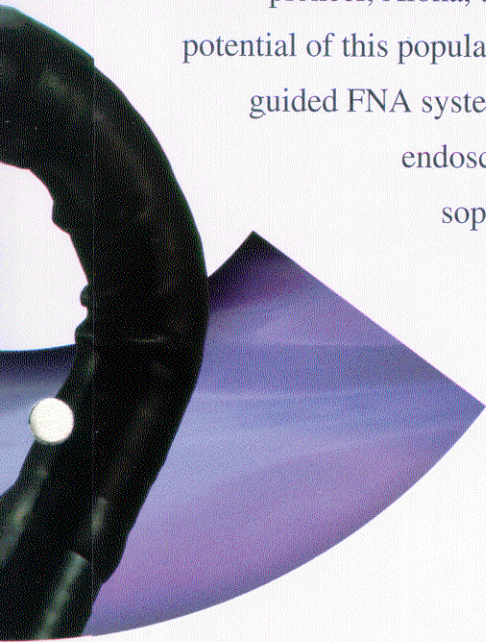
OLYMPUS **GF** TYPE **UCT140-AL5**
Powerful FNA Capability with Large 3.7 mm Diameter Channel

Features

- Incorporating the EVIS 140 series CCD and a broad band Convex Array transducer, high resolution ultrasound images and crystal clear, true-to-life video endoscopic images can be observed.
- Electronic Convex scanning facilitates the use of advanced imaging techniques such as Color Doppler and Power Doppler, making it easier to interpret blood flow conditions and offering added performance with electronically adjustable focusing and multi-frequency imaging capability.
- The tight radius of the convex array transducer has allowed a significant improvement in insertion capability.
- Wide 180° scanning angle ensures comprehensive imaging of all structures surrounding the region of interest.
- OLYMPUS' originally patented forceps elevator design allows fine-tuning of needle placement once the scope position is fixed, assuring more accurate puncture of the target.
- Matching of slim 11.8mm insertion tube diameter and standard 2.8mm channel diameter of the GF-UC140P-AL5 offers greater ease of use.
- The exceptionally large 3.7mm diameter channel in the GF-UCT140-AL5 enables more advanced FNA techniques to be performed using a 22G or larger aspiration needle. Further it will be suitable for pancreatic cyst drainage and other therapeutic procedures when combined with fluoroscopic imaging.



Endoscopic ultrasonography guided fine-needle aspiration is fast becoming one of today's most effective diagnostic techniques. Now Olympus, the world's leading manufacturer of endoscopic products, has joined forces with an ultrasound pioneer, Aloka, to develop a system that maximizes the potential of this popular new technique. The result is an EUS-guided FNA system that combines Olympus's unrivalled endoscopic video image quality with Aloka's advanced performance and comprehensive, state-of-the-art capabilities, this new system provides the support you need to explore the vast potential of EUS-guided FNA.



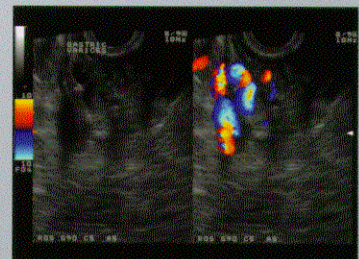
ALOKA Diagnostic Ultrasound System ProSound SSD-5500 PureHD SSD-5000 PureHD

Accurate, Comprehensive Ultrasound Imaging with a Versatile Range of Features

ALOKA's high performance ProSound SSD-5500 PureHD (Pure Harmonic Detection) / SSD-5000 PureHD platforms have established a new level of image quality and flexibility using a variety of state-of-the-art technologies, based on 12 bit digital signal conversion. Utilizing these, the ProSound concept offers outstanding capability by combining superior spatial and contrast resolution with high frame rates to give the user an unprecedented view of internal structures. In partnership with the OLYMPUS GF-UC140P-AL5 and GF-UCT140-AL5, the ProSound SSD-5500 PureHD/SSD-5000 PureHD scanners bring to EUS the perfect combination to satisfy the growing need for advanced image-guided FNA (Fine Needle Aspiration) and therapeutic capability in the GI field.

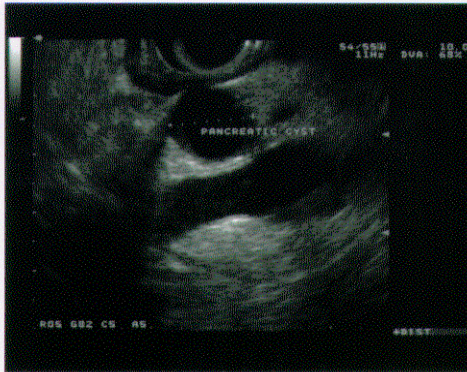
Features

- **Digital Pure Beam Imaging – premium image generation technology**
- **High Performance Color Flow/ Power Flow**
- **Quad Frequency Imaging (4 step Multi-frequency Imaging)**
- **Dual Dynamic Display (DDD)**
- **User-Friendly Ergonomic Design**
- **DMS (Data Management Subsystem)**

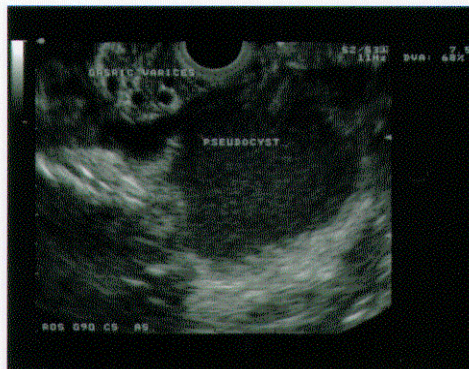
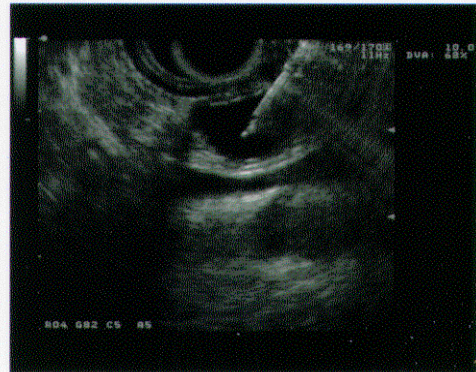


Sample Imaging Results

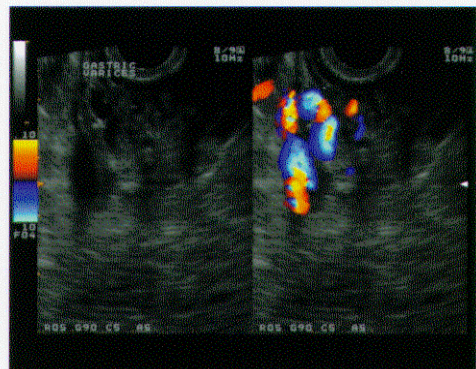
A Penetrating Solution to Tissue Diagnosis



FNA for Pancreatic Cyst



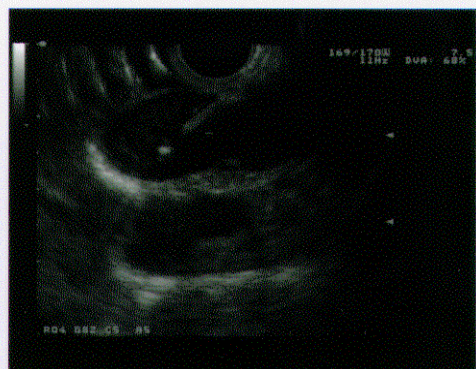
Gastric Varices and Pancreatic Pseudo Cyst



DDD (Dual Dynamic Display) of B mode and Color Doppler Mode

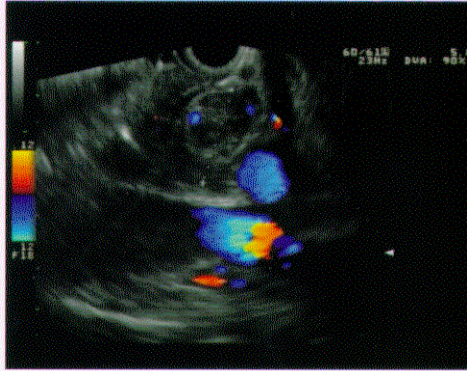


FNA for Subcarinal Nodes with Power Doppler Mode

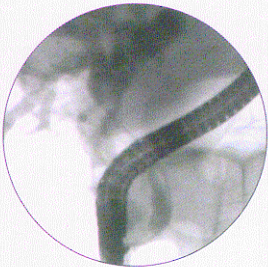
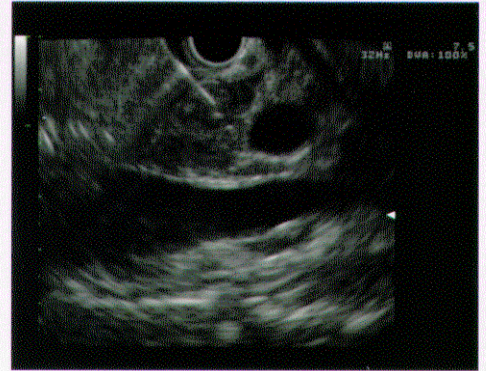




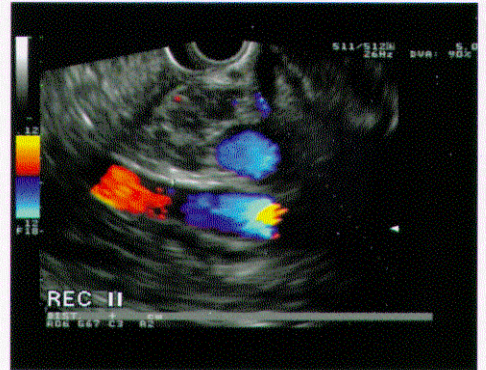
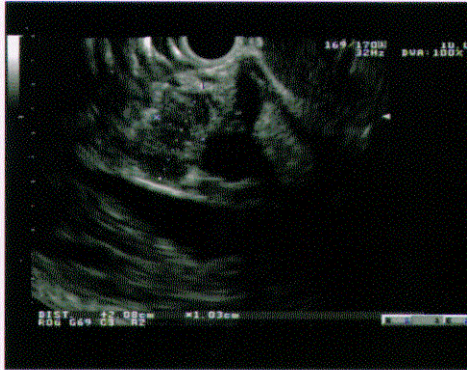
Drainage for Pancreatic Cyst



Color Doppler Mode



Gall Bladder Cancer



Color Doppler Mode

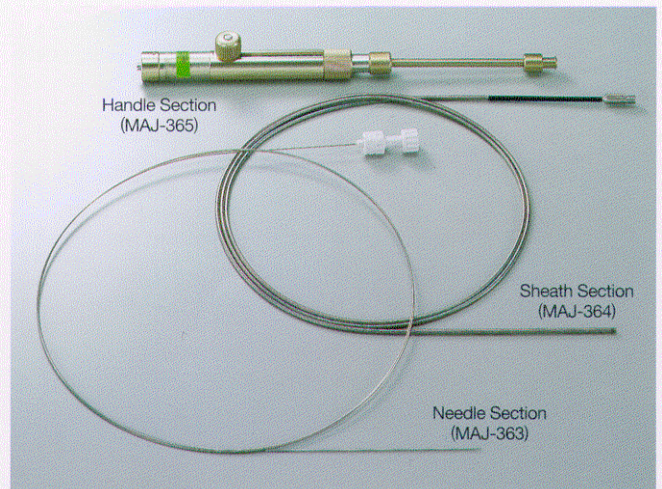
ASPIRATION NEEDLE NA-10J-1

Designed Specifically for Use with Olympus FNA Ultrasonic Endoscopes — With Excellent Targeting Capability, Outstanding Tip Visibility, and Unique Adjustable Sheath



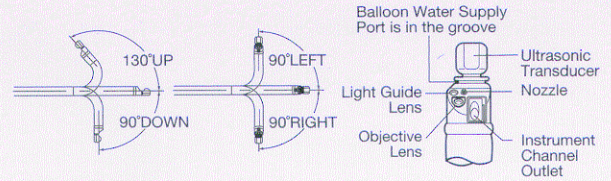
Features

- Combining with the GF-UC140P-AL5 and GF-UCT140-AL5, the NA-10J-1 allows more accurate aspiration under ultrasound guidance.
- Handle mounts onto the ultrasonic endoscope channel port for further stability.
- Adjustable-length sheath guides the needle to the target area and provides support during puncture, minimizing the need to reposition the endoscope.
- Excellent visibility of needle tip due to highly echogenic dimpled tip design.
- Sheath and handle are autoclavable for quick, easy sterilization.
- Needle and stylet are disposable and sterile packaged.



GF-UC140P-AL5, GF-UCT140-AL5/Specifications

		GF-UC140P-AL5	GF-UCT140-AL5
Endoscopic Functions	Optical System	Field of View	100°
		Direction of View	55° Forward Oblique
		Depth of Field	3 to 100mm
	Insertion Tube	Distal End Outer Diameter	ø14.2mm
		Insertion Tube Outer Diameter	ø11.8mm
		Working Length	1250mm
	Instrument Channel	Channel Inner Diameter	ø2.8mm
		Minimum Visible Distance	ø6mm
Direction from which ENDO-Therapy Accessories enter and exit the endoscopic image			
Bending Section	Angulation Range	UP130°, DOWN90° RIGHT90°, LEFT90°	
Total Length		1575mm	
Ultrasonic Functions	Display Mode	B-mode, M-mode, D-mode, Flow-mode, Powerflow-mode	
	Scanning Method	Electrical Curved Linear Array	
	Scanning Direction	Parallel to the insertion direction	
	Frequency	5, 6, 7.5, 10MHz	
	Focusing Point	Maximum 4 focusing points are available. (between F1 to F16)	
	Scanning Range	180°	
	Contacting Method	Balloon method Sterile De-aerated Water Immersion Method	



NA-10J-1/Specifications

Maximum Insertion Portion Diameter (mm)	ø2.35
Working Length (mm)	1450
Needle Width	22G
Needle Length (mm)	65
Type	Sheath Side Type
Compatible Olympus Endoscope	Model: GF-UC140P-AL5, GF-UCT140-AL5 GF-UC30P, GF-UM30P

Contents	Needle Section	Sheath Section	Handle Section
Set/Model			
NA-10J-1 Standard Set	Set of 5	Single	Single
MAJ-363-Set-A	Set of 5	—	—
MAJ-363-Set-B	Single	—	—
MAJ-364	—	Single	—
MAJ-365	—	—	Single

Denotes Olympus products for EUS-guided procedures.

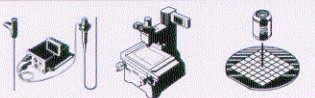
Olympus business areas



Medical and health-care area



Imaging and information area



Industrial applications area

OLYMPUS®

FOCUS ON LIFE

OLYMPUS OPTICAL CO. LTD.

2851 Ishikawa-cho, Hachioji-shi, Tokyo 192-8507, Japan

OLYMPUS OPTICAL CO. (EUROPA) GMBH.

Postfach 10 49 08, 20034 Hamburg / Wendenstrasse 14-18, 20097 Hamburg, Germany

OLYMPUS AMERICA INC.

2 Corporate Center Drive, Melville, N.Y. 11747-3157, U.S.A.

OLYMPUS KEYMED

Keymed House, Stock Road, Southend-on-Sea, Essex SS2 5QH, England

OLYMPUS SINGAPORE PTE LTD.

491B River Valley Road #12-01/04, Valley Point Office Tower, Singapore 248373

OLYMPUS HONG KONG AND CHINA LIMITED.

Room 1520-1527, Ocean Centre, 5 Canton Road, Tsimshatsui, Kowloon, Hong Kong

OLYMPUS BEIJING REPRESENTATIVE OFFICE

Rm.815, South Tower, Beijing Kerry Centre, No.1 Guangqiang Road, Chaoyang District, Beijing 100020, China

OLYMPUS MOSCOW LIMITED LIABILITY COMPANY

117071, Moscow, Malaya Kaluzhskaya 19, bld. 1, fl.2, Russia

OLYMPUS AUSTRALIA PTY. LTD.

1/104 Ferntree Gully Road, Oakleigh, VIC 3166, Australia

<http://www.olympus.com>

Printed in Japan F854SB-0201