

**OLYMPUS**<sup>®</sup>

Your Vision, Our Future

OES Hysterofiberscope

**OLYMPUS HYF TYPE XP**

Ultra-Slim Ø3.1mm Insertion Tube Enables Intra-Uterine Observation On An Out-Patient Basis





# Office Hysteroscopy Is Finally Easy And Convenient.

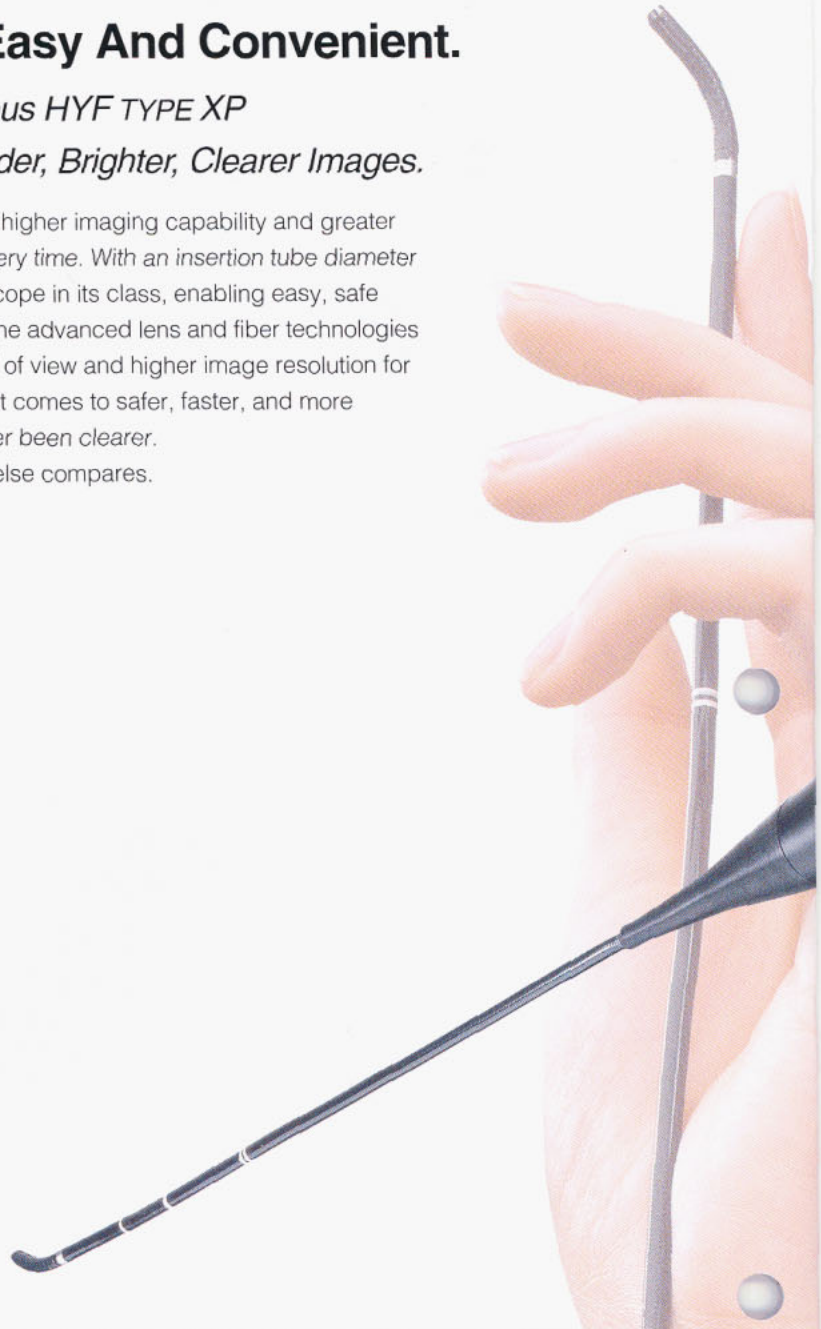
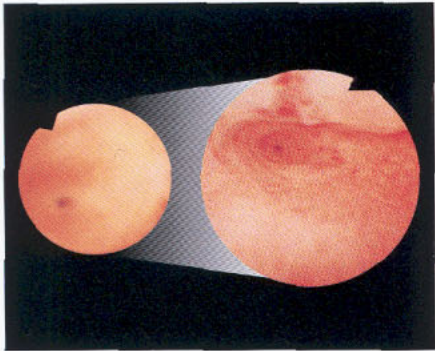
Introducing The OES HysteroFiberscope Olympus HYF TYPE XP

With Ultra-Slim  $\varnothing 3.1$  mm Insertion Tube And Wider, Brighter, Clearer Images.

This new  $\varnothing 3.1$  mm flexible hysteroFiberscope from Olympus offers higher imaging capability and greater flexibility, while assuring patients minimal trauma and faster recovery time. With an insertion tube diameter of only  $\varnothing 3.1$  mm, the flexible HYF TYPE XP is the slimmest hysteroscope in its class, enabling easy, safe insertion without cervical dilation or anesthesia. More importantly, the advanced lens and fiber technologies incorporated in the HYF TYPE XP have made possible a larger field of view and higher image resolution for easier, more accurate diagnosis of intra-uterine pathology. When it comes to safer, faster, and more accurate uterine examinations and diagnosis, the choice has never been clearer. The OES HysteroFiberscope HYF TYPE XP from Olympus. Nothing else compares.

## Bigger, Clearer Images

With a diameter 1.3 times larger than our previous models and a clearer, more detailed picture, the HYF TYPE XP's lens not only provides doctors with an unobstructed view for diagnosing intra-uterine pathology, it also reduces eye fatigue.



## Newly Developed Optical System Assures Accurate Diagnosis

### Ultra-Slim $\varnothing 3.1$ mm Insertion Tube

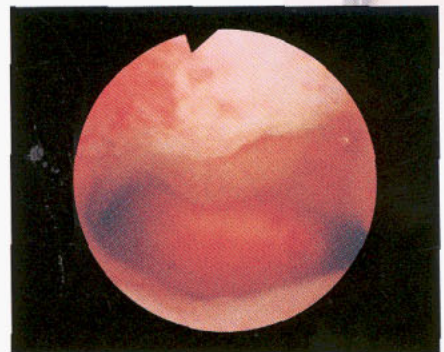
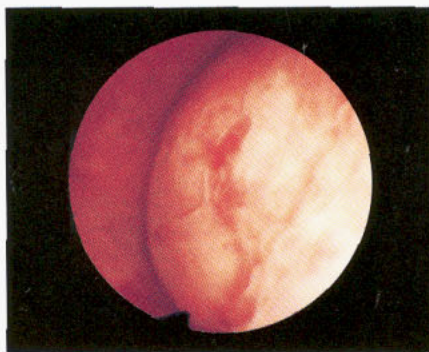
Never has a scope this powerful been this slim. With an insertion tube diameter of only  $\varnothing 3.1$  mm, the HYF TYPE XP can be inserted safely into the endocervical canal without anesthesia or cervical dilation, minimizing patient discomfort and trauma and allowing quick, on-the-spot examinations on an out-patient basis.

### Superior Resolution And Brightness

The scope is slimmer, but its optical system is more powerful than ever. With nearly double the number of glass fibers and an advanced new lens system, the HYF TYPE XP offers sharp, detailed images that are brighter and more natural-looking than those available from previous models.

### Wider Field Of View For Observation Of Both Tubal Ostia

With its 100° wide field of view, the HYF TYPE XP lets you easily view both tubal ostia simultaneously, enabling you to perform diagnostic procedures quickly and more efficiently.







## Optimized Design For Greater Flexibility And Smoother Insertion

### Optimized Flexibility For Smoother Insertion And Effortless Maneuvering

Stiff enough at the distal end to provide maximum control and flexible enough at the proximal end to allow easy maneuvering, this scope inserts smoothly and easily. Even when the uterus is swollen by disease, the scope can be passed easily through the cervical canal without traumatizing the tissue.

### Easy One-Handed Operation

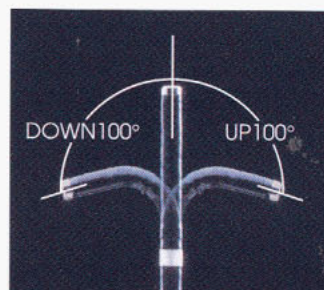
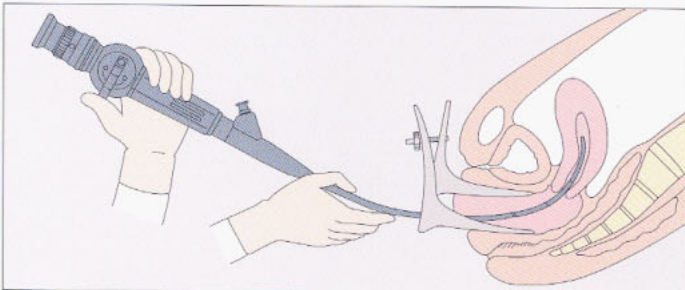
The exclusive, Olympus-developed solid rubber pad on the grip responds instantly to tactile pressure, moving the insertion tube in response to your every move - back and forth, up and down, or twisting.

### Wide Short-Scale Angulation Range Of 100° Up And Down

With its wide, short-scale angulation range, the HYF TYPE XP can be easily maneuvered within the narrow confines of the uterus without fear of damaging the uterine wall.

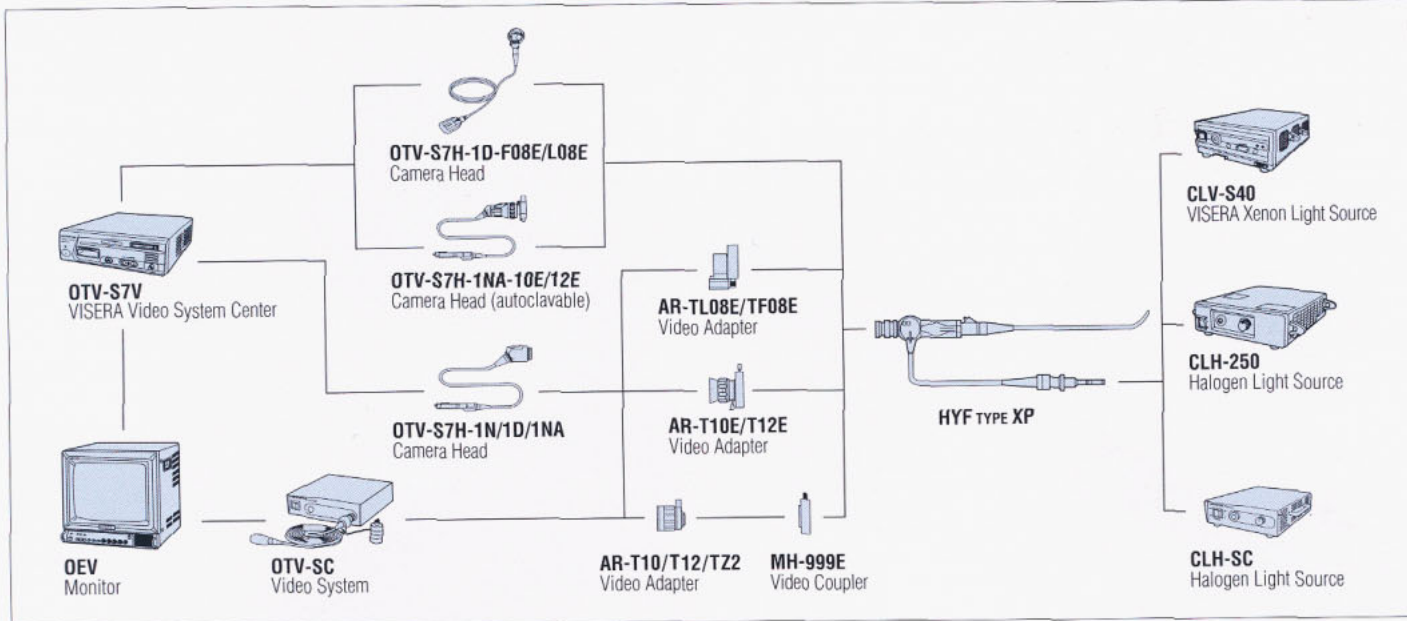
### Standard Eyepiece

Designed for easy integration into existing systems, the HYF TYPE XP features a standard eyepiece that allows it to be combined with a wide range of ancillary equipment. There's no need to replace or upgrade the equipment you already have.





## System Chart



### Specifications

Optical system	Field of view	100°
	Direction of view	0° (Forward viewing)
	Depth of field	2 ~ 50 mm
Instrument channel	Inner diameter	ø1.2 mm
Bending section	Range of tip bending	Up 100° / Down 100°
Distal end	Outer diameter	ø3 mm
Insertion tube	Outer diameter	ø3.1 mm
Working length		240 mm
Total length		540 mm

### Standard Set

- HYF-XP OES HYSTEROFIBERSCOPE
- BW-7B Channel Cleaning Brush
- BW-15SH Channel Cleaning Brush
- MB-156 ETO Cap
- MH-507 Channel-Opening Cleaning Brush
- Instruction Manual

## Ancillary Equipment



**VISERA Video System**

The VISERA Video System includes high-resolution videoscopes and autoclavable camera heads/ videolaparoscopes, and can be used for all endoscopic procedures, whether in the office or operating room. Still/moving image recording is digital, making application and management of recorded images smoother than ever.



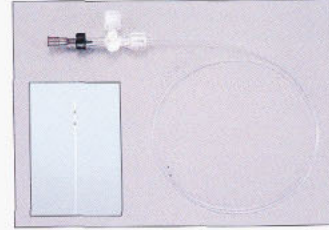
**OTV-SC Video System**

With its high-performance CCD, this system delivers superb imaging quality. An electronic shutter ensures that the optimal amount of light is supplied at all times.



**CLV-S40 VISERA Xenon Light Source**

The high-quality xenon lamp provides illumination ideal for endoscopy, allowing observation in deep sites or advanced techniques. Also, the Standby function and Intensity-Mode Memory simplify procedures.



**PR-22SV Disposable Cannula**

Integrates the T-plug and cannula tube into one convenient unit and features a specially designed tip that permits easy insertion without damaging the uterine wall or endometrium, to enable smooth salpingography.

Specifications, design and accessories are subject to change without any notice or obligation on the part of the manufacturer.

# OLYMPUS®

**OLYMPUS CORPORATION**  
2951 Ishikawa-cho, Hachioji-shi, Tokyo 192-8507, Japan  
**OLYMPUS WINTER & IBE GMBH**  
Kuehnstrasse 61, 22045 Hamburg, Germany  
**OLYMPUS EUROPA GMBH**  
Postfach 10 49 08, 20034 Hamburg / Wendenstrasse 14-18, 20087 Hamburg, Germany  
**OLYMPUS AMERICA INC.**  
2 Corporate Center Drive, Melville, N.Y. 11747-3157, U.S.A.  
**OLYMPUS LATIN AMERICA, INC.**  
6100 Blue Lagoon Drive, Suite 390 Miami, Florida 33126-2087, U.S.A.  
**KEYMED LTD.**  
Keymead House, Stock Road, Southend-on-Sea, Essex SS2 5QH, England

**OLYMPUS SINGAPORE PTE LTD.**  
491B River Valley Road #12-01/04, Valley Point Office Tower, Singapore 248373  
**OLYMPUS HONG KONG AND CHINA LIMITED**  
Room 1520-1527, Ocean Centre, 5 Canton Road, Tsimshatsui, Kowloon, Hong Kong  
**OLYMPUS BEIJING REPRESENTATIVE OFFICE**  
Room 1401, East Tower, Gong Yuan No6 Royal Palace, No6 Gong Yuan Xijie, JianGuoMenNei, DongCheng District, Beijing, 100005, China  
**OLYMPUS MOSCOW LIMITED LIABILITY COMPANY**  
117071, Moscow, Malaya Kaluzhskaya 19, bld. 1, fl.2, Russia  
**OLYMPUS AUSTRALIA PTY LTD.**  
31 Gibby Road, Mount Waverley, VIC, 3149, Australia

www.olympus.com