

**OLYMPUS**<sup>®</sup>

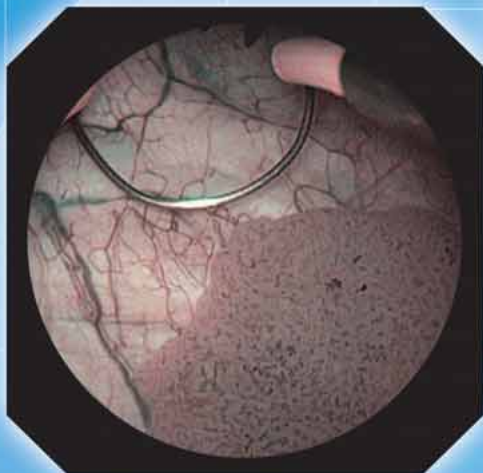
Your Vision, Our Future

NEW

HD CAMERA HEAD

EVIS  
**EXERA II**

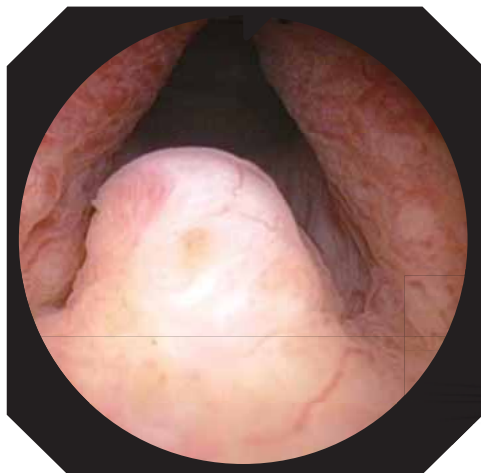
High Definition At Your Fingertips



1080i  
**HDTV**

# Vivid Visualization

## HDTV1080i\*

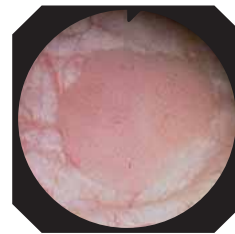


HDTV1080i image

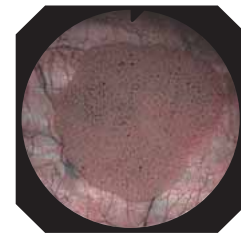
With 1080 effective scanning lines of picture information, HDTV1080i dramatically expands the range of clinical possibilities. The high pixel density of HDTV1080i images ensures that they are smooth and clear, with reproduction so accurate that details and colors remain sharp and true-to-life.



## Narrow Band Imaging™\*

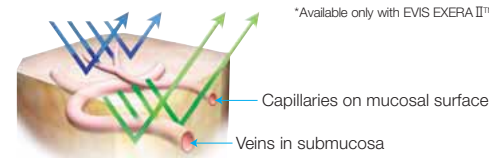


Conventional image



NBI image

NBI is an optical image enhancement technology that improves the visibility of vessels and other tissue on the mucosal surface. Narrow-band illumination, which is strongly absorbed by hemoglobin and penetrates only the surface of tissues, is ideal for enhancing the contrast between the two. As a result, under narrow-band illumination, capillaries on the mucosal surface are displayed in brown on the monitor, and veins in the submucosa are displayed in cyan.



\*Available only with EVIS EXERA II™.

# Comfortable Control



## Extremely Light-Weight Body

Olympus has developed an exclusive, very light-weight, new L-shaped HD camera head. The compact design makes the scope more maneuverable, reducing stress and fatigue even during long procedures.

## Remote Control Switches

Convenient remote control allows up to three functions — such as electronic zoom, NBI, shutter, or others — to be custom programmed to provide added control. Additionally, the control switches are remote from the camera, helping to reduce the camera shake when you operate a function.

### HD CAMERA HEAD OTV-S7ProH-HD-L08E



### Specifications

Size	Camera Head	φ21 x 83 mm
	Cable	φ3.3 mm x 4 m
Weight		60 g (head part) 20 g (remote control part)
Observation	Pickup System	Interline type CCD solid-state image pickup
Classification	Degree of protection against electric shock	Type BF.
(electro-magnetic equipment)	Degree of protection against explosion	The product should be kept away from flammable gases.
Cleaning / disinfection, sterilization	Cleaning / disinfection	Immersible in disinfectant solution
	Sterilization	Ethylene oxide gas sterilization possible

### Ancillary Equipment



EVIS EXERA II™  
Universal Platform

Specifications, design and accessories are subject to change without any notice or obligation on the part of the manufacturer.

**OLYMPUS**

**OLYMPUS MEDICAL SYSTEMS CORP.**  
Shinjuku Monolith, 3-1 Nishi-Shinjuku 2-chome, Shinjuku-ku, Tokyo 163-0914, Japan  
**OLYMPUS WINTER & IBE GMBH**  
Kuehnstrasse 61, 22045 Hamburg, Germany  
**OLYMPUS MEDICAL SYSTEMS EUROPA GMBH**  
Postfach 10 49 08, 210034 Hamburg / Wendenstrasse 14-18, 20087 Hamburg, Germany  
**OLYMPUS SURGICAL & INDUSTRIAL AMERICA INC.**  
One Corporate Drive, Orangeburg, New York 10962, U.S.A.  
**OLYMPUS LATIN AMERICA, INC.**  
5301 Blue Lagoon Drive, Suite 290 Miami, Florida 33126-2097, U.S.A.  
**OLYMPUS KEYMED GROUP LTD.**  
Keymed House, Stock Road, Southend-on-Sea, Essex SS2 5QH, England

**OLYMPUS SINGAPORE PTE LTD.**  
491B River Valley Road #12-01/04, Valley Point Office Tower, Singapore 248373  
**OLYMPUS HONG KONG AND CHINA LIMITED**  
L43, Office Tower, Langham Place, 8 Argyle Street, Mongkok, Kowloon, Hong Kong  
**OLYMPUS (BEIJING) SALES & SERVICE CO., LTD.**  
Room 1202, NCI Tower, A12 Jianguomenwai Avenue Chaoyang District Beijing, 100022, China  
**OLYMPUS MOSCOW LIMITED LIABILITY COMPANY**  
117071, Moscow, Malaya Kaluzhskaya 19, bld. 1, fl.2, Russia  
**OLYMPUS AUSTRALIA PTY LTD**  
31 Gilby Road, Mount Waverley, VIC., 3149, Australia  
**OLYMPUS KOREA CO., LTD.**  
4F, 5F, Gyeongnam Bldg., 157-27, Samseong-dong, Gangnam-ku, Seoul, Korea

www.olympus.com

Printed in Japan R609UE-0109