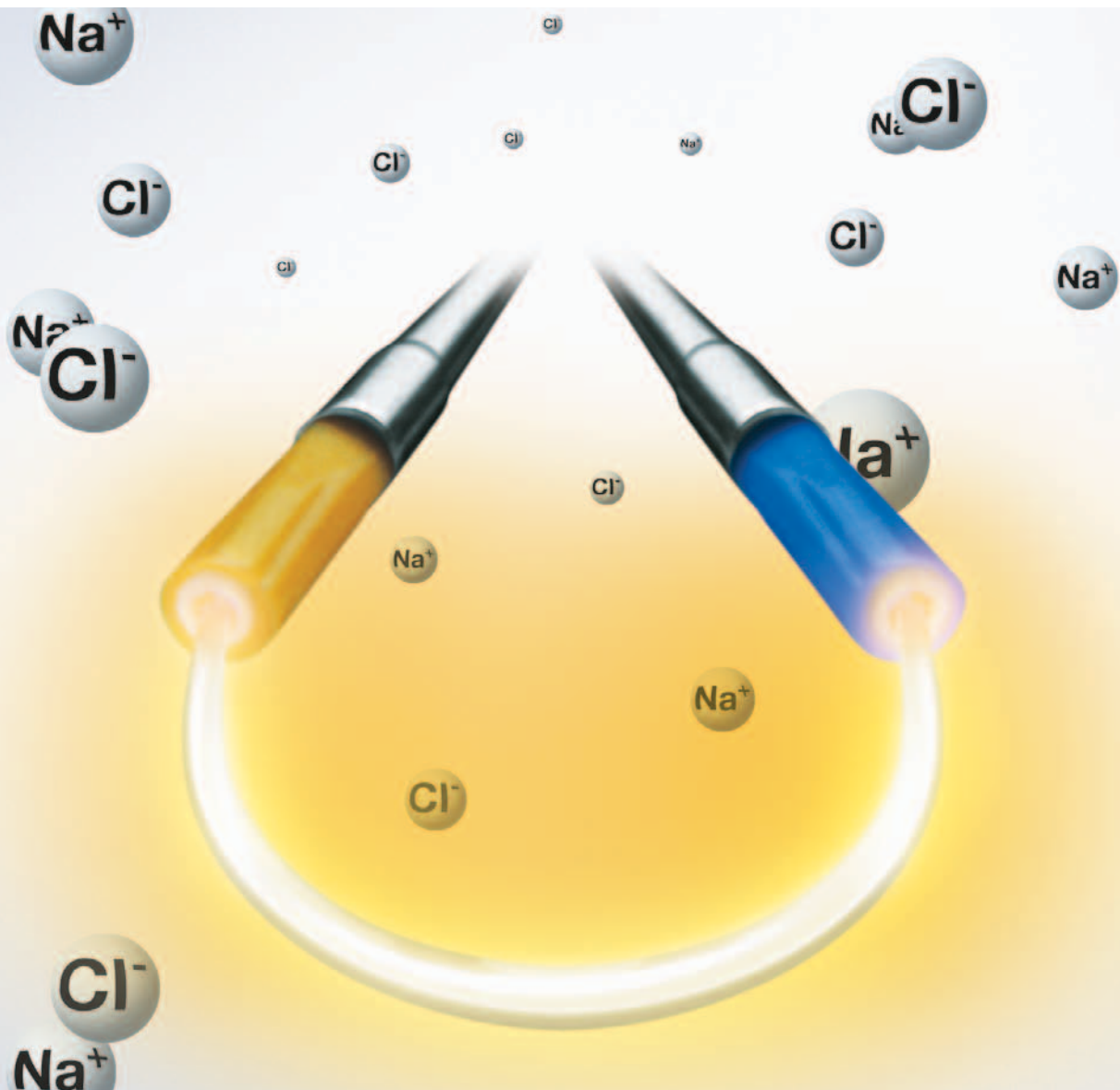


TCRis 2.0

TransCervical Resection in Saline



TCRiS: THE FUTURE IN GYNAECOLOGY

ONE COMPLETE SYSTEM FOR ALL YOUR NEEDS IN HYSTEROSCOPY

TAKE YOUR TCRiS TO THE NEXT LEVEL

- Work more efficiently with continuous plasma activation
- Work faster with the large loop due to bigger size and improved ignition
- Apply the optimal amount of energy. Controlled, precise and quick cutting
- Consolidate your fleet of HF units – the ESG-400 does it all
- Maximize patient safety with the new HysteroFlow II / HysteroBalance II pump and balancing system for reliable fluid control
- Work with the best picture possible with the next generation of HD imaging Visera Elite and the dedicated ultra light-weight camera head

OES PRO Resectoscope
Ergonomic for less fatigue



Vaporisation Electrode
No tissue chips for better vision, time saving and increased patient comfort



Large Loop Electrode
For efficient and safe resection



Optimum Energy Output
Easy-to-use generator with plug and play for TCRiS



Accurate Fluid Management
Maximum patient safety by reliable fluid control



Image Quality Standard
Latest generation of brilliant HD picture

Camera Head
Ultra light-weight for less fatigue with NBI option



SPECIALISTS ABOUT THERAPEUTIC HYSTEROSCOPY

ONE COMPLETE SYSTEM FOR ALL YOUR NEEDS IN HYSTEROSCOPY



Prof. Olav Istre
Aleris-Hamlet Hospital
Copenhagen, Denmark

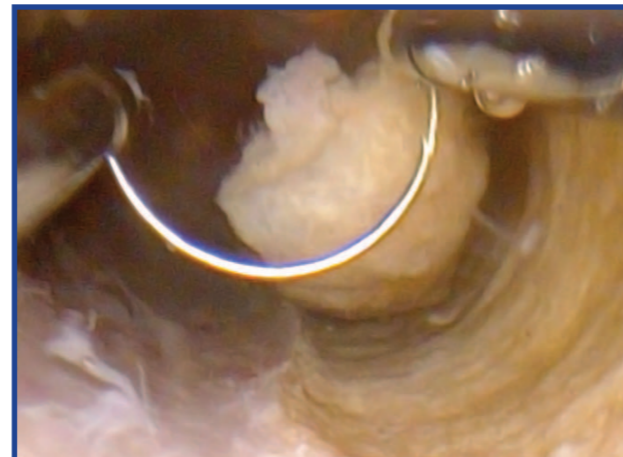
“I have experience in working with the Olympus TCRis system for many years.

The excellent view and reliable and sufficient flow during the procedure are special characteristics and with the variety of electrodes all therapeutic hysteroscopic procedures can be performed.”

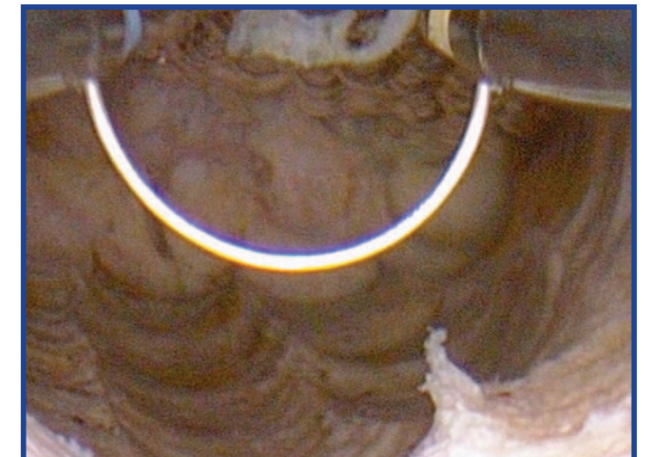


ENDOMETRIAL ABLATION

In contrast to conventional monopolar resection in glycine or sorbitol, which is associated with the known risk of Hyponatraemia, also known as the TUR-syndrome, the introduction of saline solution has contributed to make hystero-resection safer for the patient. Abnormal uterine bleeding can be caused by an unusual thickening of the endometrial lining, polyps or fibroids. The TCRis loop is used to remove the increased endometrial and fibroid tissue by enabling a smooth and fast cut combined with the safety benefits of using saline during the procedure.

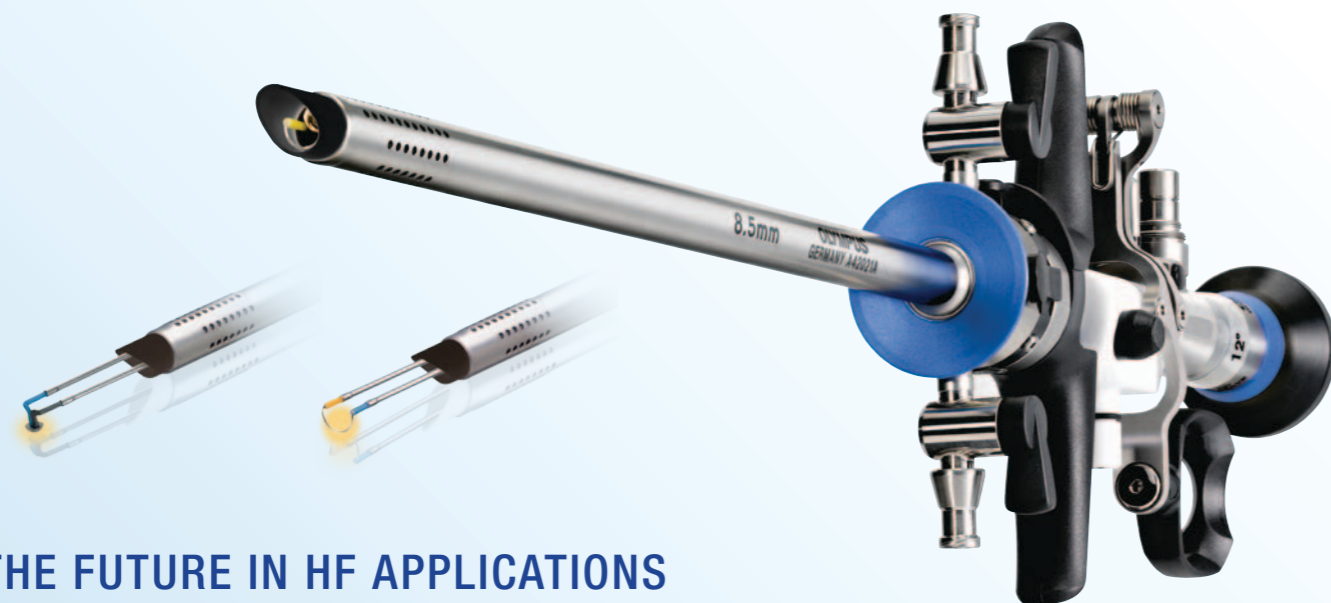


Alternatively endometrial ablation or coagulation in the cornual areas can be performed using the TCRis vaporization electrode, avoiding the need to remove tissue fragments. As the tissue is vaporized and coagulation is provided at the same time, this may prevent significant blood loss as well. Due to the fact that the generation of tissue fragments is avoided, visibility during the procedure is enhanced.



SEE AND TREAT AT ITS BEST

STATE-OF-THE-ART HD IMAGE QUALITY AND RESECTION IN SALINE AS NEVER SEEN IN ANY OPERATING ROOM



THE FUTURE IN HF APPLICATIONS

EXPLORE THE RANGE OF ELECTRODES

Dedicated electrodes offer a variety of treatment options in gynaecology:

- Vaporisation electrode for vaporising myomas, the endometrium and coagulation in the cornual area
- Variety of loop sizes for resecting polyps, myomas and the endometrium
- Rollerball for providing coagulation of endometrium and in cornual areas
- Needle electrode for septum removal
- 45° electrode for easier resection of endometrium in cornual areas or for polyps



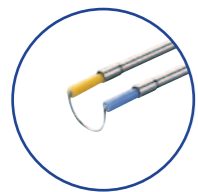
Large Loop Electrode

- Increased loop to the same size as monopolar electrodes
- Less cuts enable quicker resection
- Saving of operating time



TCRis Vaporisation Electrode

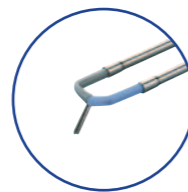
- No tissue chips thus better visualization
- Eliminates removal of tissue chips
- Avoids removal and reinsertion of the resectoscope



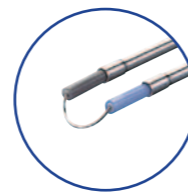
Loop



Roller



Needle



Angled Loop



STATE-OF-THE-ART HD IMAGE QUALITY

LATEST HD IMAGING AND NBI FUNCTION

Visera Elite –

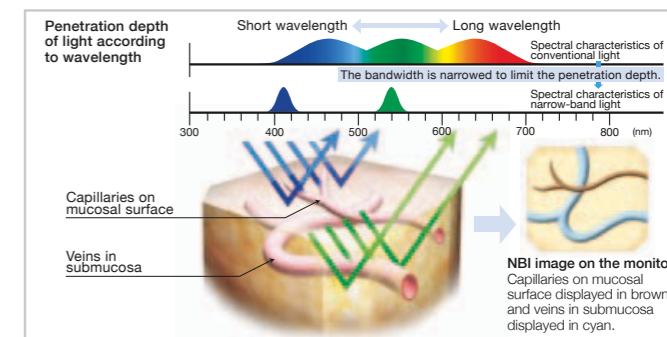
Superior Imaging and Surgeon Comfort

HD image quality never seen before in any operating room.

- 3D noise reduction is a new system particularly suited for movie images. It detects the exact noise by comparing it with the last frame, thus obtaining a much higher image resolution than previous types.
- The Visera Elite Imaging Platform serves as a hub to connect rigid and flexible scopes across multiple specialities – standardizing training, reprocessing and service to achieve OR efficiencies.



Narrow Band Imaging is a proprietary optical image enhancement technology that is only available on Olympus products. NBI enhances the visualization of vessels and other tissues on the mucosal surface and is 20% brighter compared to the previous model. This can facilitate for example the assessment in endometrial cancer and endometriosis.



ESG-400

THE ESG-400 IS EASY TO USE AND OFFERS EXCELLENT PERFORMANCE WITH MAXIMUM PATIENT SAFETY



CONSOLIDATE YOUR FLEET OF HF GENERATORS – THE ESG-400 DOES IT ALL

The new ESG-400 supports you in gynaecology with an intuitive touchscreen, specialized modes and high performance with tissue-adaptive power output.

FEATURES AND BENEFITS

Full range of monopolar and bipolar modes

- Perform open, laparoscopic and endoscopic surgery procedures

Tissue-adaptive power output

- Apply the optimal amount of energy
- Controlled, precise and quick cutting

Quick memory function

- Find your preferred settings easily
- New saline modes (for bipolar resection)

- Improved ignition performance
- Continuous vaporization

Saline detection

- Make sure that you are using the right fluid

SOCKETS



BIPOLAR

For bipolar HF cables (instruments, e.g. HiQ+ Bipolar hand instrument)



UNIVERSAL – Plug & Play

For TCRis Saline cable including instrument recognition and presetting of output mode



MONOPOLAR 1

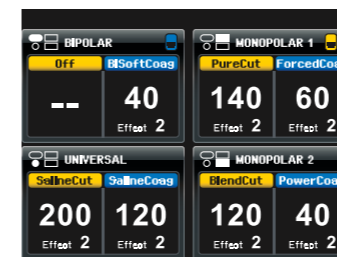
For monopolar HF cables (instruments, e.g. resectoscope, hand instrument or pencil device)



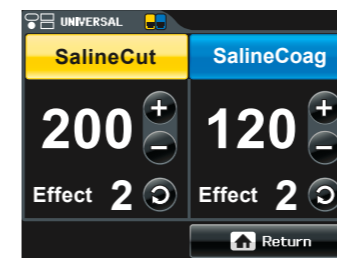
MONOPOLAR 2

For monopolar HF cables (instruments, e.g. resectoscope, hand instrument or pencil device)

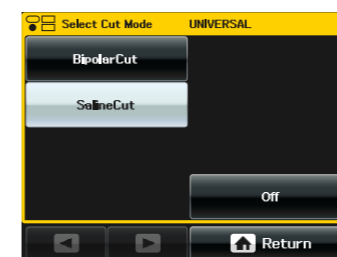
TOUCHSCREEN



Select
Touch relevant quadrant to change settings



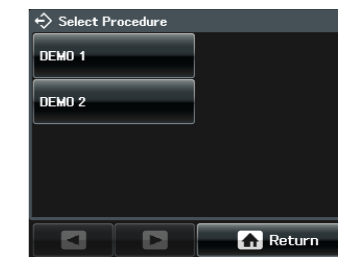
Change
Power level:
+
-
Effect:
⌚



Change
Mode:
Touch relevant area to change mode

SalineCut

PUSH



Select
previously saved procedure settings



Footswitch
Assign single or double footswitch or activate AutoStart



Menu
Save / delete procedure settings, choose language, etc.

HYSTEROFLOW II / HYSTEROBALANCE II

SAFETY AND COMFORT IN HYSTEROSCOPY



HYSTEROFLOW II PUMP

- Fast and accurate pressure control
- Automatic instrument recognition for optimum flow characteristics
- Large numeric and symbolic display of intrauterine pressure
- Visual and acoustic overpressure and perforation alarm
- Disposable tubings in DEHP-free material

MAIN FEATURES

Accurate fluid loss measurement aids to increase the safety during hystero-resection to avoid excessive absorption of the distension medium into the body of the patient. The Olympus HysteroFlow II and HysteroBalance II system provides accurate and easy measurement of fluid loss and intrauterine pressure in a closed system.



USER FRIENDLINESS

- Easy system set up
- Touchscreen text based menu
- Easy bag and container change during procedure

VERSATILITY

- Robust system trolley with universal container fixation and separate balance
- Disposable and reusable tubing

PATIENT SAFETY

- Clear text menu
- Accurate pressure monitoring and multiple alarms
- DEHP-free disposable tubing



HYSTEROBALANCE II MEASURING UNIT AND SYSTEM TROLLEY

- Large numeric and symbolic display of current fluid loss
- Visual and acoustic alarm when fluid loss limit is reached
- Exact measurement of in- and outflow from two separate weighing cells
- Compatible with vast array of containers and fluid bags without additional adapters

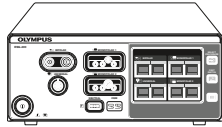


OES PRO RESECTOSCOPE FOR HYSTERORESECTION

HysteroFlow II/HysteroBalance II and OES Pro Resectoscope for TCRis (TransCervical Resection in saline) or for monopolar resection: the perfect integrated solution for hysteroresection

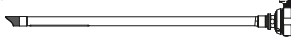
ESG-400

WB91051W HF unit "ESG-400",
100–120 V / 220–240 V



TCRiS Resection Sheaths

A42011A Inner sheath,
for 8.5 mm outer sheath,
ABS, incl. standard obturator

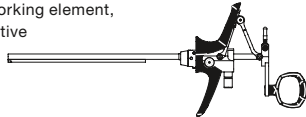


A42021A Outer sheath, 8.5 mm,
2 stopcocks,
rotatable

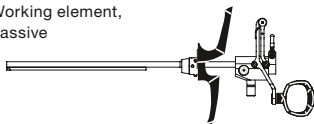


TCRiS Working Elements

WA22366A Working element,
active

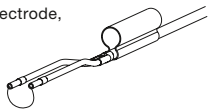


WA22367A Working element,
passive



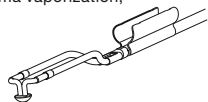
TCRiS HF-Resection Electrodes

HF-resection electrode,
loop,
WA22301D 12°, small
WA22302D 12°, medium
WA22503D 12°, large
WA22305D 30°, small
WA22306D 30°, medium
WA22507D 30°, large



HF-resection electrode,
band,
WA22521C medium, 12°
WA22523C medium, 30°

WA22557C HF-resection electrode "PlasmaButton™",
button, for plasma vaporization,
12° and 30°



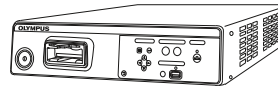
HF-resection electrode,
angled loop,
WA22331D 12° and 30°, small
WA22332D 12° and 30°, medium

WA22351C HF-resection electrode,
roller,
12° and 30°

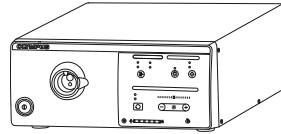
WA22355C HF-resection electrode,
45° needle,
12° and 30°

Visera ELITE Video System

OTV S190 Processor

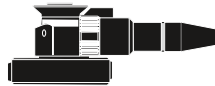


CLV S190 Light source



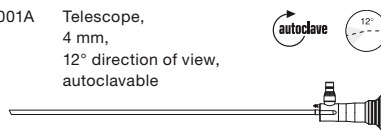
Camera Head

N3499640 Camera head,
HDTV 1080, NBI, L-shape,
with three inline cord switches for remote
control, with integrated video adapter
(clamping connector),
"OTV-S7ProH-HD-L08E", 0.8x

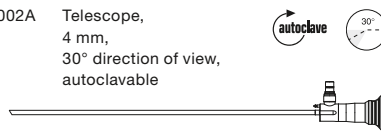


Telescopes

A22001A Telescope,
4 mm,
12° direction of view,
autoclavable



A22002A Telescope,
4 mm,
30° direction of view,
autoclavable



Accessories

TC-E400 **For ESG-400**
Energy cart

Instrument compatibility
USG-400, ESG-400, MAJ-1869,
MAJ-1870, WB950356, WB950355

Do not place any device other than
specified by Olympus on the shelves.

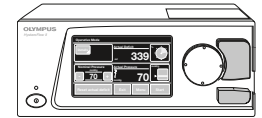
WA00014A HF cable,
bipolar,
4 m,
for ESG-400

For Visera ELITE
N3629160 Monitor "OEV261H",
LCD,
26"

Delivery includes:
monitor, power cable,
AC adapter, DC cable, hook with screw,
6 screws for monitor mount

HysteroFlow II

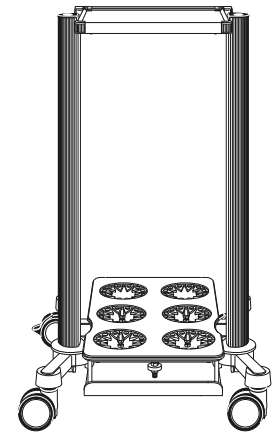
WA40620A Pump "HysteroFlow II",
100–240 V



Delivery includes:
HysteroFlow II pump,
mains power connection cable

HysteroBalance II

WA40622A Balancing system "HysteroBalance II"



For Telescopes
WA03200A Light guide cable

For HysteroFlow II / HysteroBalance II
WA40634A Tubing set,
for 2 irrigation bags,
sterile,
inflow and outflow,
5 pcs.



WA40635A Tubing set,
for 2 irrigation bags,
sterile,
inflow only,
10 pcs.



WA40636A Tubing set,
for 2 irrigation bags,
reusable,
inflow only,
1 pc.