

# OLYMPUS®

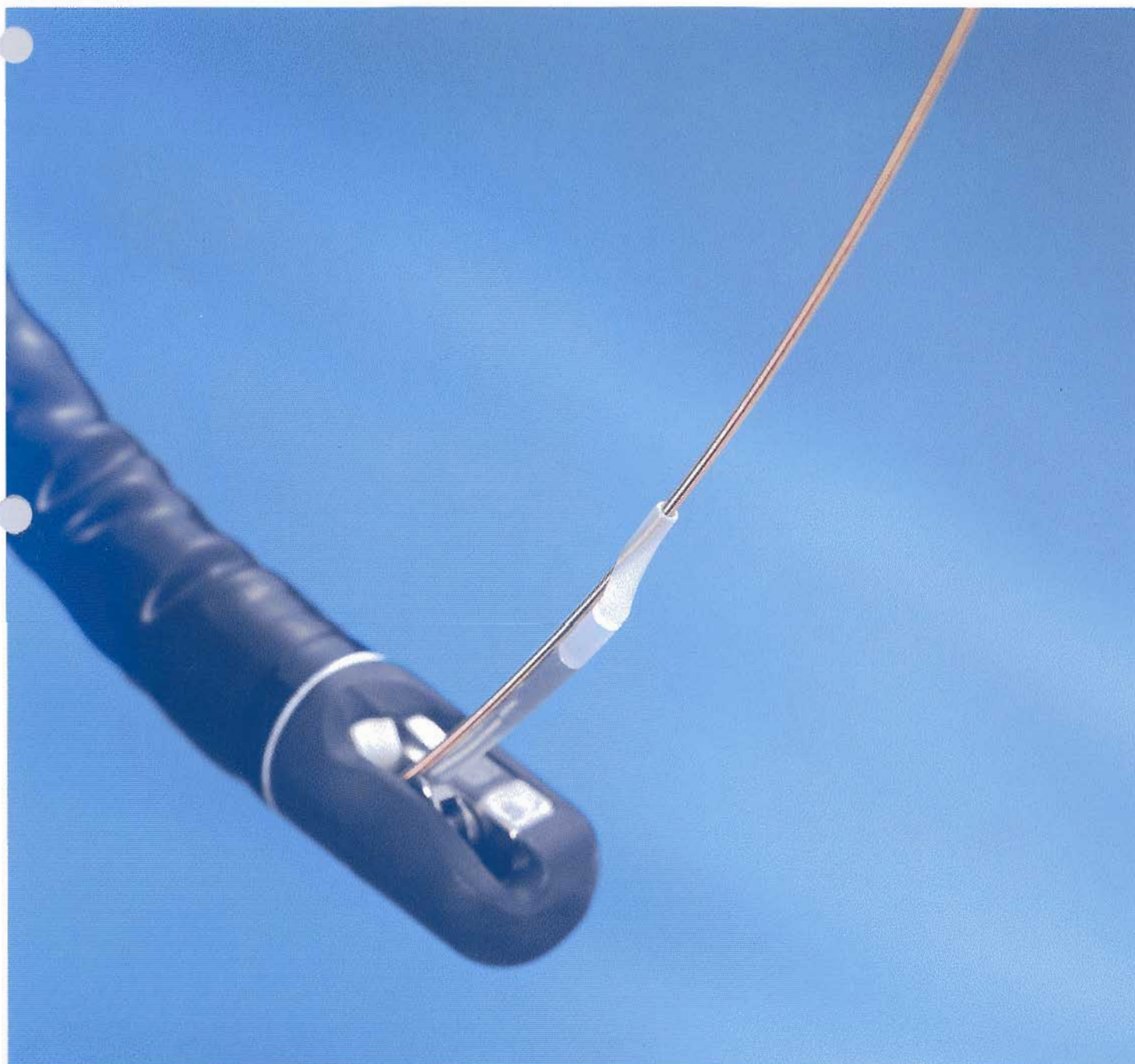
Olympus is about life. About photographic innovations that capture precious moments of life. About advanced medical technology that saves lives. About information- and industry-related products that make possible a better living. About adding to the richness and quality of life for everyone. Olympus. Quality products with a **FOCUS ON LIFE**

ULTRASONIC PROBE

NEW  
PRODUCT

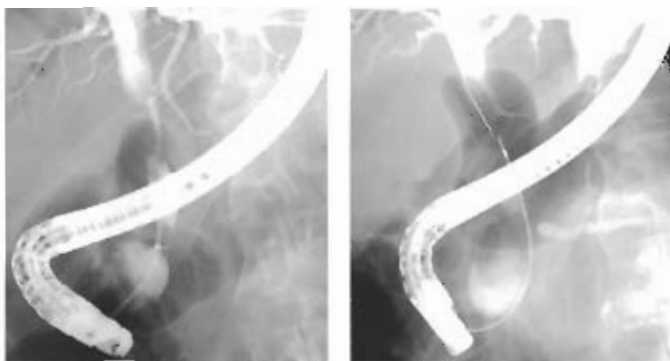
## ULTRASONIC PROBE UM-G20-29R

Introducing a New Wire-Guided Ultrasonic Probe that Expands the Use of  
Ultrasound to Narrow Lumens



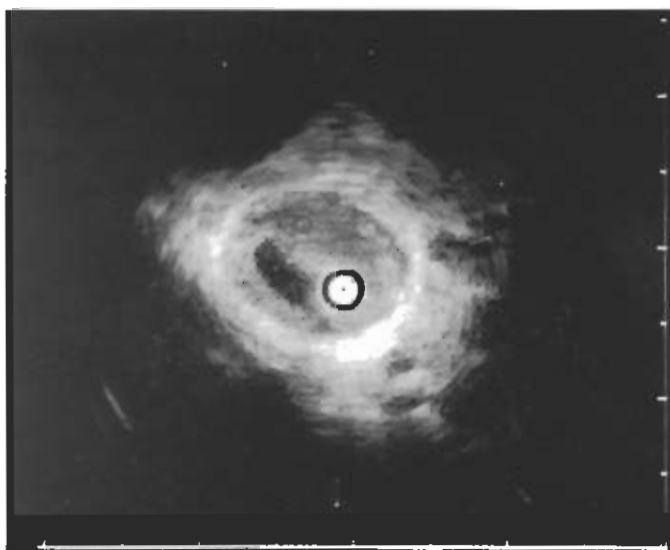
## Ultrasonic Probe

# UM-G20-29R



Ultrasound examination of the middle bile duct

Insertion through guidewire

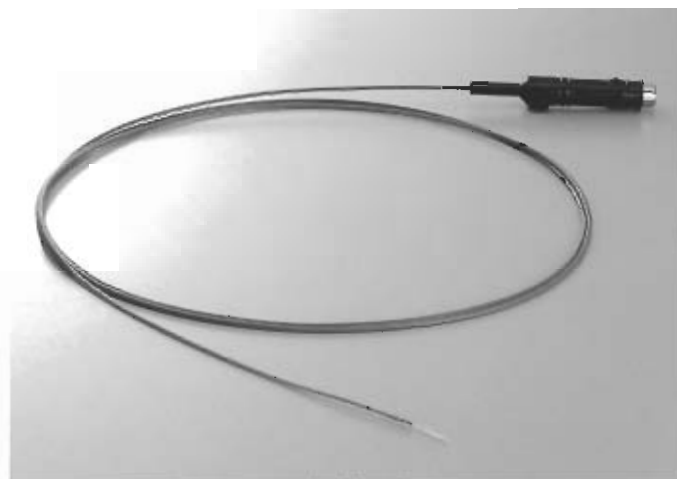


Delineates tumorous lesion at stricture

## Easy Insertion Through a Standard Endoscope Expands Ultrasonic Examination Possibilities.

This latest addition to the OLYMPUS endoscopic ultrasound line-up increase the versatility of the system and helps make the ultrasound examinations to perform. Designed to pass down the channel of a standard endoscope, the UM-G20-29R Ultrasonic Probe allows examination of areas that were previously unreachable with a conventional ultrasonic endoscope. Thanks to the convenient guide wire, you'll be able to insert the UM-G20-29R into even the tightest strictures.

- Wire-guided insertion allows easy insertion even into a pancreatobiliary duct stricture.
- 2.9 mm outer diameter allows use with endoscope channel diameters of 3.2 mm or larger.
- Finely detailed high resolution ultrasound images from 20 MHz frequency.
- Seamless ultrasound examinations during routine endoscopic examinations when integrated with the complete OLYMPUS endoscopy system.



### Specifications

|                                     |   |
|-------------------------------------|---|
| Display Mode                        | B-Mode  |
| Scanning Method                     | Mechanical,Radial Scanning                                |
| Scanning Direction                  | Perpendicular to the direction of insertion,360° Scanning |
| Frequency                           | 20MHz   |
| Contact Method                      | Direct Contact Method                                     |
| Working Length                      | 2050mm  |
| Total Length                        | 2140mm  |
| Insertion Tube Outer Diameter       | ø2.0mm(Distal end side 200mm)<br>ø2.2mm(Proximal side)    |
| Max.Outer Diameter                  | ø2.9mm  |
| Guidewire Guide Port Length         | 10mm  |
| Compatible Guidewire Outer Diameter | 0.035inch or less   |

### Olympus business areas



Medical and health-care area



Imaging and information area



Industrial applications area

# OLYMPUS®

FOCUS ON LIFE

#### OLYMPUS OPTICAL CO.,LTD.

Saiki Building, 22-2, Nishi-Shinjuku 1-chome, Shinjuku-ku, Tokyo, Japan

OLYMPUS OPTICAL CO.(EUROPA) GMBH  
Postfach 10 49 04, 20004 Hamburg 1, Wendenstrasse 14-16, 20097 Hamburg, Germany

OLYMPUS AMERICA INC.  
2 Corporate Center Drive, Melville, N.Y. 11747-3157, U.S.A.

#### OLYMPUS KEYMED

Keymed House, 5100c Road, Southend-on-Sea, Essex SSO 2QM, England

#### OLYMPUS SINGAPORE PTE LTD.

491B River Valley Road #12 01 04, Valley Point Office Tower, Singapore 248373

#### OLYMPUS BEIJING REPRESENTATIVE OFFICE

Room No. 3406 Beijing Jing Guang Centre, Hu Jia Lou, Chao Yang Qu, Beijing, China

#### OLYMPUS MOSCOW CORPORATION

117071, Moscow, Malaya Kuznetskaya 19, bld 1, 2, Russia

#### OLYMPUS AUSTRALIA PTY. LTD.

1104 Ferntree Gully Road, Croydon, Vic 3106, Australia