

OLYMPUS®

Olympus is about life. About photographic innovations that capture precious moments of life. About advanced medical technology that saves lives. About information- and industry-related products that make possible a better living. About adding to the richness and quality of life for everyone. Olympus. Quality products with a **FOCUS ON LIFE**

ULTRASONIC
PROBE

Ultrasonic Probe **UM-S30-20R**

Super-Slim Ultrasonic Probe With 1.7-mm Diameter Insertion Tube



Slim 1.7-mm Outer Diameter And High-Frequency Output For Improved Maneuverability And Superior Ultrasonic Imaging

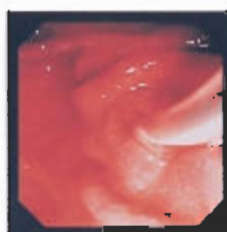
With its 30-MHz high-frequency, high-resolution ultrasound images, the UM-S30-20R Ultrasonic Probe adds a new level of sharpness and clarity to ultrasonographic examinations when passed through the channel of an Olympus EVIS videoscope. Even more remarkably, this superior imaging performance is achieved in a probe with a super-slim insertion tube that measures a mere 1.7 mm across, allowing you to expand the range of applications from strictures of the pancreatic and bile ducts to narrow passages of the peripheral bronchi and urinary organs.

- Insertion tube outer diameter measures 1.7 mm at the distal side and 2.0 mm at the proximal side.
- Applicable to the peripheral bronchi and urinary organs.
- 30-MHz high-frequency, high-resolution ultrasound visualization capability.
- Designed for use in conjunction with the high-performance EU-M30 Endoscopic Ultrasound Center.

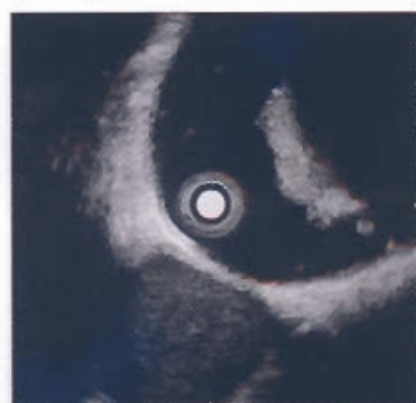


Specifications

Display Mode	B-mode
Scanning Method	Mechanical, Radial Scanning
Scanning Direction	Perpendicular to the direction of insertion, 360° scanning
Frequency	30MHz
Contact Method	De-aerated Water Immersion Method / Direct contact Method
Working Length	2050mm
Total Length	2140mm
Insertion Tube Outer Diameter	1.7mm (Distal end side 850mm) 2.0mm (Proximal side)
Insertion Tube Max. Outer Diameter	2.0mm
Channel Inner Diameter (Endoscope)	2.0mm CH scopes with working length less than 600mm 2.2mm or more except for L-length Colonoscope



(4cm Range)



(2cm Range)

Olympus business areas



Medical and health-care area



Imaging and information area



Industrial applications area

OLYMPUS®

FOCUS ON LIFE

OLYMPUS OPTICAL CO., LTD.
2851 Inokawa-cho, Hachioji-shi, Tokyo 182-8507, Japan

OLYMPUS OPTICAL CO. (EUROPA) GMBH
Postfach 10 49 08, 20034 Hamburg / Wardenstrasse 14-16, 20087 Hamburg, Germany

OLYMPUS AMERICA INC.
7 Corporate Center Drive, Melville, N.Y. 11747-3127, U.S.A.

OLYMPUS KEYMED
Keymed House, Brook Road, Southend-on-Sea, Essex S82 5QH, England

OLYMPUS SINGAPORE PTE LTD.
4215 River Valley Road #12-01/04 Valley Point Office Tower, Singapore 248375

OLYMPUS HONG KONG AND CHINA LIMITED.
Rm. 418, South Tower, Beijing Kerry Centre, No. 1 Guangzhou Road, Chaoyang District, Beijing 100020, China

OLYMPUS BEIJING REPRESENTATIVE OFFICE
Rm. 418, South Tower, Beijing Kerry Centre, No. 1 Guangzhou Road, Chaoyang District, Beijing 100020, China

OLYMPUS MOSCOW LIMITED LIABILITY COMPANY
117671, Moscow, Malyy Kaluzhskaya St, bld. 1, R.F. Russia

OLYMPUS AUSTRALIA PTY. LTD.
1/104 Ferntree Gully Road, Oakleigh, VIC 3166, Australia

<http://www.olympus.com>