

# OLYMPUS

Your Vision, Our Future

## URF-P6/P6R

The super-slim flexible uretero-reno fibroscope for laser lithotripsy.



# FLEXIBLE URETEROSCOPY JUST GOT SMALLER

## Easy access

### Super-slim shaft

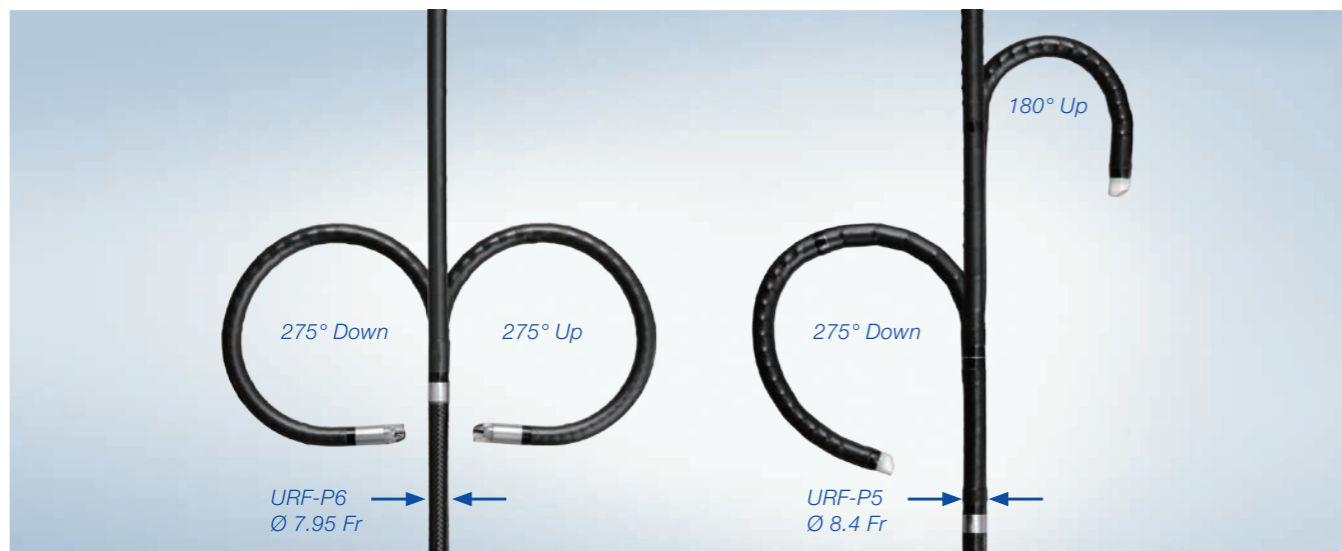
The URF-P6 is compatible with a 9.5 Fr access sheath, which helps the scope to be inserted into smaller ureters. When using a 12 Fr access sheath, the narrow design leaves plenty of room for irrigation outflow, helping to ensure that the scope moves smoothly and that stone fragments can pass easily alongside the scope while minimising renal pressure.

### Stiff shaft

Thanks to the adoption of Gyrus ACMI technology, the URF-P6's shaft is stiffer than the previous scope generation, URF-P5. The stiff shaft is designed for smooth insertion of the scope into the ureter, providing easier access to the kidney. The torque-stable shaft will help maximise control throughout the entire procedure.

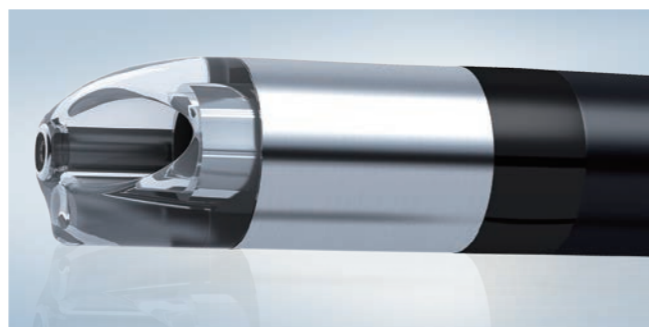
### Angulation

The 275° up/down angulation is designed to help ease access to the stones in upper, mid and lower calyces, even when working with a laser fibre.



### Evolutiontip

The 7.95 Fr super-slim shaft with Olympus' unique Evolutiontip is designed to help ensure smooth scope insertion and navigation, even through tight anatomy.



**Evolutiontip**

## Synergy of Olympus and Gyrus ACMI technology

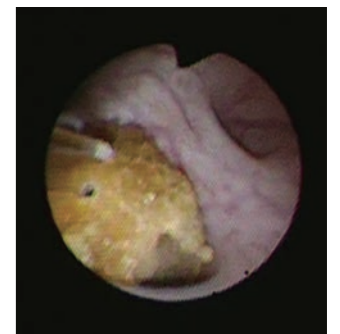
As two of the world's leading innovators in the flexible ureteroscope market, Olympus and Gyrus ACMI have joined forces to advance ureteroscopy to the next level. The resulting synergy of flexible endoscope technology by Olympus and Gyrus leads to the URF-P6, the super-slim flexible ureteroscope which is ideal for laser lithotripsy in small anatomies.



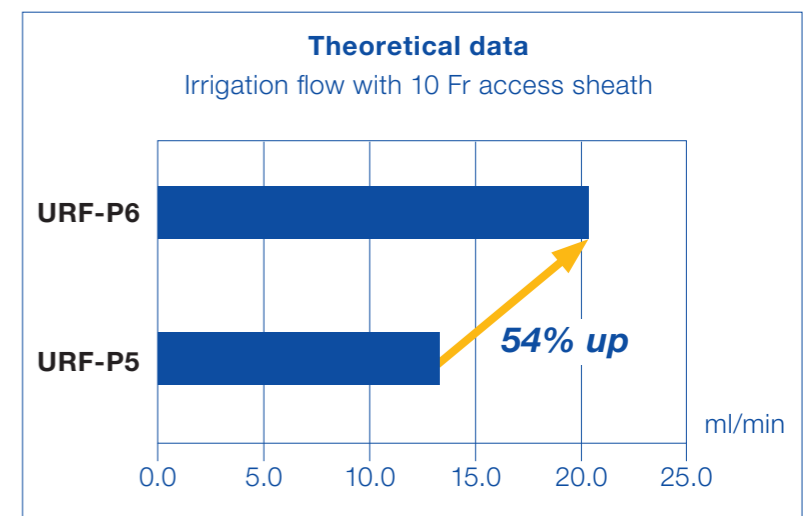
## Clear visualisation

### Excellent image quality even with slimmer design

The URF-P6 maintains the same high image quality that you would expect from Olympus, despite the slimmer design. The built-in moiré filter reduces the moiré effect and provides the clear picture.



The 7.95 Fr super-slim shaft is designed for better irrigation with a 10 Fr access sheath, maximising image quality during laser lithotripsy.



# URF-P6/P6R



## Standard set

<b>URF-P6</b>	Uretero-reno fibroscope OLYMPUS	1
<b>MAJ-579</b>	Biopsy valve	10
<b>MAJ-891</b>	Forceps/irrigation plug	1
<b>MB-156</b>	ETO cap	1

## URF-P6/P6R specifications

<b>Optical system</b>	Field of view	90°
	Direction of view	Forward viewing
	Depth of field	2–50
<b>Insertion tube</b>	Distal end outer diameter	4.9 Fr EvolutionTip
	Insertion tube outer diameter	7.95 Fr (2.65 mm)
	Working length	670 mm
<b>Instrument channel</b>	Inner channel diameter	3.6 Fr (1.2 mm)
<b>Bending section</b>	Angulation range	Up 275° Down 275°
	<b>Total length</b>	1050 mm

<b>MH-507</b>	Channel-opening cleaning brush	1
<b>BW 15SH</b>	Channel cleaning brush	1
<b>BW-400B</b>	Single-use, single-ended cleaning brush	1

## Endourology products

### Flexible uretero-reno videoscope



#### Uretero-reno videoscope Olympus URF TYPE V

The chip-on-the-tip technology provides a moiré-free, bright image with high colour reproduction without the need for a camera head attachment, and eliminates the need to focus.

<b>URF-V</b>	8.5 Fr distal end, 9.9 Fr insertion tube, 670 mm, 3.6 Fr channel
--------------	--

### Percutaneous nephroscope

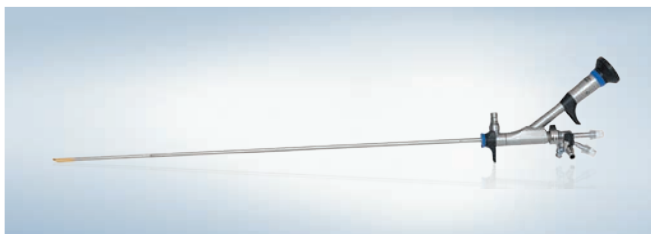


#### OES Pro high-flow nephroscope

By combining the latest hybrid lens technology with a high-flow sheath design, the percutaneous nephroscope offers exceptional image quality.

<b>WA33036A</b>	30° DOV, 4 mm channel includes attachment A3342
<b>WA33037A</b>	Outer sheath, 25 Fr, rotatable

### Semi-rigid ureteroscope



The Olympus semi-rigid ureteroscope provides clear visualisation with its fused quartz fibre-optic image bundle in an autoclavable design. The atraumatic tip is designed to help prevent perforation of the urinary tract.

### Single-channel OES Pro ureteroscope

<b>WA29040A</b>	angled-ocular, 7° DOV, 6.4/7.8 Fr x 430 mm, 4.2 Fr channel
<b>WA29041A</b>	angled-ocular, 7° DOV, 6.4/7.8 Fr x 330 mm, 4.2 Fr channel
<b>WA29042A</b>	angled-ocular, 7° DOV, 8.6/9.8 Fr x 430 mm, 6.4 Fr channel
<b>WA29048A</b>	straight-ocular, 7° DOV, 6.4/7.8 Fr x 430 mm, 4.2 Fr channel
<b>WA29049A</b>	straight-ocular, 7° DOV, 6.4/7.8 Fr x 330 mm, 4.2 Fr channel

### Dual-channel OES 4000 ureteroscope

<b>WA02943A</b>	angled-ocular, 7° DOV, 7.5 Fr x 430 mm, 3.6 Fr & 2.5 Fr channels
<b>WA02944A</b>	straight-ocular, 7° DOV, 7.5 Fr x 430 mm, 3.6 Fr & 2.5 Fr channels
<b>WA02946A</b>	straight-ocular, 7° DOV, 7.5 Fr x 330 mm, 3.6 Fr & 2.5 Fr channels

Specifications, design and accessories are subject to change without any notice or obligation on the part of the manufacturer.

**OLYMPUS**

**OLYMPUS EUROPA HOLDING GMBH**  
 Postbox 10 49 08, 20034 Hamburg, Germany  
 Wendenstrasse 14–18, 20097 Hamburg, Germany  
 Phone: +49 (0)40 237 730, Fax: +49 (0)40 230 761  
 www.olympus-europa.com