

OLYMPUS

Your Vision, Our Future

VISERA ELITE

URETERO-RENO FLEXIBLE VIDEOSCOPE

URF-V2

Highest Image Quality in Superslim 8.4 Fr



HIGHEST VIDEOSCOPE IMAGE QUALITY IN SUPERSLIM 8.4 FR



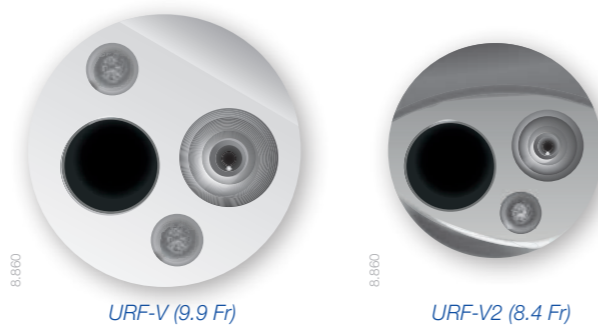
“ The digital technology for flexible ureteroscopy is one of the major improvements for a better treatment of kidney stones and urothelial tumor ablation. ”

Prof. Olivier Traxer, Tenon Hospital, Paris, France

8.4 Fr Slim Design and Stiff Shaft for Facilitating Access and Maneuverability

- Slim URF-V2 fits into 10/12 Fr access sheath allowing for access in tight ureters
- Using the URF-V2 in combination with a 12/14 Fr access sheath ensures the clearest visualization thanks to improved flow
- Increased shaft stiffness for improved steering of the ureterscope in order to reach lower pole calyx easily

Outer Diameter Comparison

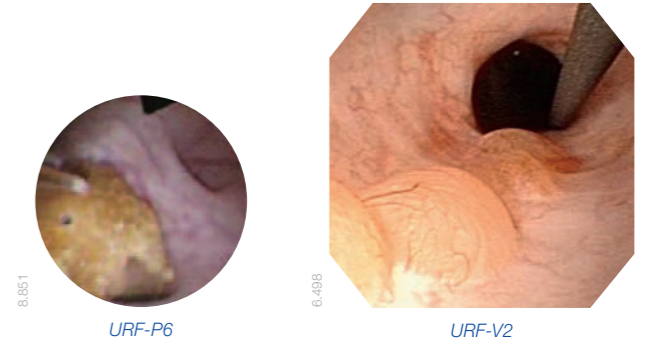


8.4 Fr

Highest Image Quality for Faster Stone Treatment and More Accurate Tumor Detection with NBI

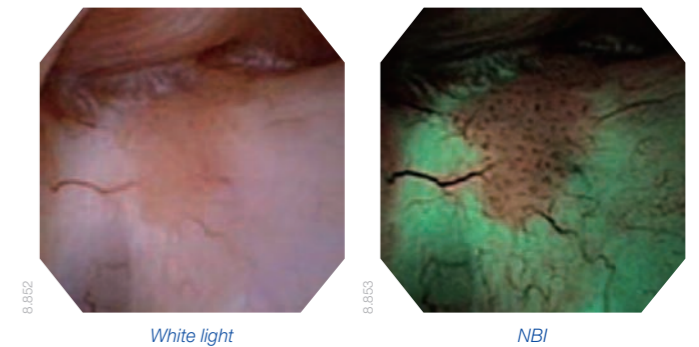
Stone

Chip-on-the-tip technology allows for sharp visualization and larger images compared to fiberscope technology and makes long stone treatment procedures up to 20% faster and laser activation safer.



Tumor

NBI as optical image enhancement technology is of substantial help in better identifying upper tract tumors due to improved visibility of vessel structures.



Improved Maneuverability to Reach Everywhere



275° Wide Angulation Range

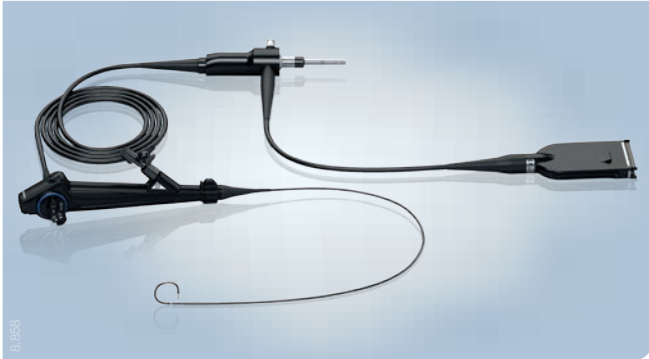
Deflection capabilities of 275° up and down allow for outstanding visualization of lower renal calyx as well as upper and middle calyces.



Unique Insertion Tube Rotation for More Comfort

The 120° rotation function allows the operator to change the shaft's angle by rotating a ring on the handle. This potentially allows for longer laser activation making treatment of large stone burdens feasible, more precise, and more comfortable.

Specifications



URF-V2/URF-V2R

Optical system	Field of view	80°
	Direction of view	Forward viewing
	Depth of field	1.5–50 mm
Insertion tube	Distal end, outer diameter	8.5 Fr (2.83 mm)
	Insertion tube, outer diameter	8.4 Fr (2.8 mm)
	Working length	670 mm
Instrument channel	Inner channel, diameter	3.6 Fr (1.2 mm)
Bending section	Angulation range	Up 275° Down 275°
	Total length	980 mm

Standard Set – URF-V2 (N4506330)

URF-V2	Flexible video ureteroscope	1
MAJ-579	Biopsy valve	10
MAJ-891	Forceps/irrigation plug	1
MB-156	ETO cap	1

MH-507	Channel-opening cleaning brush	1
BW-15SH	Suction connector cleaning brush	1
BW-400B	Single-use, single-ended cleaning brush	1

Endourology Products

UroPass access sheath – ureteral access sheath



Irri-Flo II – irrigation pump for improved flow and visualization



VISERA ELITE System



Accessories

Adjustable biopsy port seal – BPS-A



Adjustable biopsy port seal Y-adapter – BPS-Y



Specifications, design, and accessories are subject to change without any notice or obligation on the part of the manufacturer.